



DOMESTIC DELUXE LAWN EDGERS 2 and 4 Stroke Engines

ACN 000 583 924

- Safety Precautions • Assembling • Service
- Operating and Edging Instructions

Important Manual – Do Not Throw Away

Manual always to be available for reference or instructing new operators.

Introduction: Gasoline Lawn Edger

This Atom Gasoline Powered Edger is designed to the highest standards to ensure you many hours of uninterrupted service. Pay special attention to the safety precautions. Only persons who understand this Manual are to operate the Edger.

To receive maximum performance and satisfaction from your Edger, it is important that you read and understand the maintenance and safety precautions before using the unit. Contact your Atom dealer or the Atom distributor in your area if you do not understand or cannot carry out any of the operating instructions in this Manual.

Atom's philosophy is to continually improve all of its products. As a result, engineering changes and improvements are made from time to time. Appearances may differ between models. This manual covers information required to operate, maintain and service this Atom Lawn Edger.

AS WITH ANY POWER TOOL IMPROPER USE CAN CAUSE SERIOUS INJURY. Make sure this manual is read and carefully understood before starting or operating this equipment.

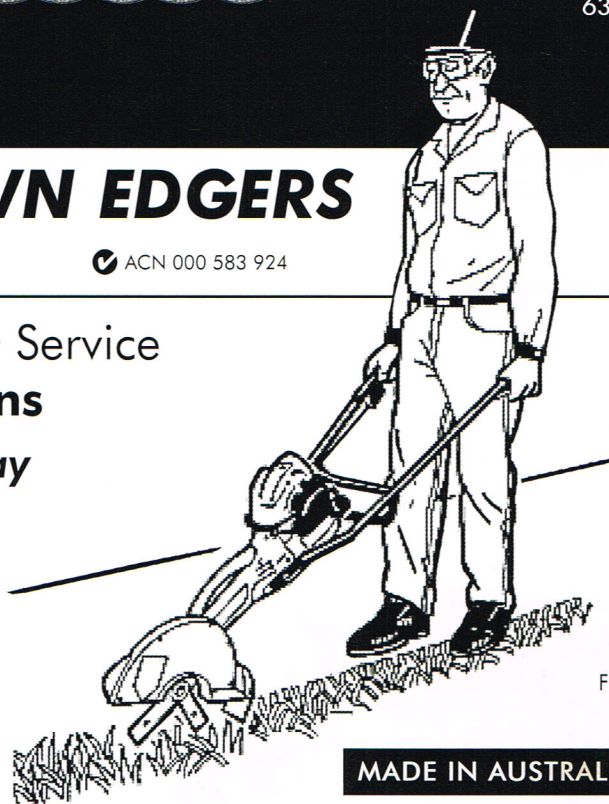


FIG 1

MADE IN AUSTRALIA

Contents

	PAGE
Safety Warning Labels	1
Safety Precautions	2 - 3
Assembling the Edger	3
Parts and Controls	4
Fuels and Oils	4
Starting and Stopping Instructions	5
Edging Instructions	5
Maintenance Instructions	5
Troubleshooting Tips	6
Parts List and Parts Illustration	7-8

SAFETY WARNING The purpose of Safety Warnings and Notes in this Manual is to attract your attention to possible dangers and deserve your careful attention and understanding. The Safety Warnings in this Manual and on the Edger do not, by themselves, eliminate any danger. The instructions or warnings they give are not substitutes for proper accident prevention measures.

WARNING Failure to obey a safety warning can result in injury to yourself and others.

NOTE Advises you of information or instructions vital to the operation or maintenance of the equipment.

The information contained in this manual is also available at www.atomindustries.com

FIG 2 SAFETY WARNING LABELS



Read operators manual



Wear eye protection

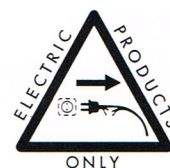


1.5m (50 feet)

Keep bystanders away



Blade cover label



Disconnect the mains plug if the cord is damaged or entangled

SAFETY PRECAUTIONS

! WARNING As with any power tool, the use of the edger with rotating blades may be dangerous. It is important that you read, fully understand, and observe the following safety precautions and warnings. Re-read this operator's manual and the safety instructions periodically. Read and understand all labels attached to edger.

! WARNING Do not lend, rent or sell this machine without the operator's manual. Be sure that anyone using this unit understands the information contained in this manual before use.

! WARNING As with any power tool, some special safety pre-cautions must be observed to reduce the risk of personal injury. Careless or improper use may cause serious or even fatal injury.

Safe use of an Atom Edger involves:

1. The Operator.
2. The Atom Edger.
3. The use of the Atom Edger.

THE OPERATOR

PHYSICAL CONDITION

Operator must be in good physical condition and mental health, and not under the influence of any substance (drugs, alcohol, etc.) which might impair vision, dexterity or judgement (Fig 3).

Do not operate the Edger when fatigued. Be alert – if you get tired while operating the machine, take a break. Tiredness may result in loss of control. Working with any power tool can be strenuous. If you have any condition that might be aggravated by strenuous work, check with your doctor before operating the machine.



FIG 3

! WARNING This Edger must not be operated by minors. Bystanders, especially children and animals should not be allowed in the area where a machine is in use and be at least 15 metres (50 feet) away (Fig 4). If approached switch off motor immediately. **When not in use store the edger out of reach of children.**

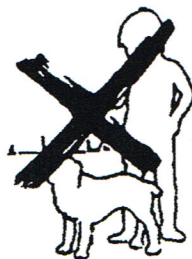


FIG 4

PROPER CLOTHING

Clothing must be sturdy and snug-fitting, but allow complete freedom of movement (See Fig 5). Avoid loose-fitting jackets, flared or cuffed pants, or anything that could trip the operator. Wear overalls or long pants to protect your legs. **DO NOT** wear shorts. Use of gloves when working with the Lawn Edger is recommended.

Good footing is most important. Wear sturdy shoes with nonslip soles. **DO NOT** wear sandals, open footwear (flip-flops) or operate with bare feet. In hot or sunny conditions, always wear a hat and long sleeve shirt for protection against skin cancers. Use of a good brand of sunscreen cream is also recommended on exposed skin surfaces.



FIG 5

! WARNING Proper eye protection is a must. The blade cover may not protect the operator from all moving foreign objects, even though the discharge is directed away from the operator, as ricochets and bouncebacks may occur during edger operations. Never operate an Atom Edger unless wearing goggles or properly fitting safety glasses with adequate front and side protection which comply with ANSI Z 87.1.

! WARNING Replace immediately any worn or broken debris deflector shield or blade cover. Check from time to time that all screws are tight. Never operate your machine if it is damaged, improperly adjusted or not completely and securely assembled.

SAFE MAINTENANCE, REPAIR & STORING

Use only original Atom replacement parts for maintenance and repair. Use of parts manufactured by others will void warranty and/or may cause serious or fatal injury.

! WARNING Always stop the motor, make sure that the blades have stopped, before adjusting blade height. Before doing any adjustment, maintenance or repair work, or cleaning the unit or blades, disconnect spark plug cap.

Follow the maintenance instructions in the appropriate section of this manual. Any motor repairs should be carried out by a person with suitable servicing experience.

SAFE STARTING & WORKING CONDITIONS

Always inspect that the unit is in good working order before use. When working with the Atom Edger, always wrap your fingers tightly around each handle grip. Keep your hands in this position to have your machine under control at all times. **NEVER** attempt to operate the Atom Edger with one hand, as a loss of control may result in serious or fatal injury. Make sure the handle grips are in good condition and free of moisture, oil or grease. Use both hands, one on each handle, to operate and control the edger. Do not overreach. Keep proper footing and balance at all times.

SAFE FUELING INSTRUCTIONS

! WARNING Gasoline is an extremely flammable and explosive fuel. Use extreme caution when handling gasoline. Do not smoke or bring any fire or flame near the fuel.



Refuel outdoors only. **Always switch off the engine and allow it to cool before refueling. Relieve fuel tank pressure by loosening fuel cap slowly.** Never remove fuel filler cap while engine is running.

Select bare ground for fueling, then move at least 3 metres (10 feet) from the fueling spot before starting the engine. Wipe off any spilled fuel before starting your Atom Edger and check for leakage. Always tighten fuel filler cap securely after fueling.

! WARNING Always allow engine to cool before refueling. Accidental spillage of gasoline over hot engine could cause fire or explosion to occur with consequent possible disfigurement or fatal injury. Wash and clean hands after fueling.

SAFE STARTING

You should always inspect your unit before starting it. Make sure the controls and safety devices are working properly. Place the machine on firm ground or other solid surface in an open area and stand with one foot on handle cross-brace base. Maintain good balance and secure footing.

! NOTE When you pull the starter grip, do not wrap starter rope around your hand. Do not allow grip to snap back, but guide starter rope slowly back to permit rope to rewind properly. Failure to follow this procedure may result in injury to hand or fingers or may damage the starter mechanism.

! WARNING The Atom Edger is a one-person machine. To reduce risk of eye or other injury from thrown objects, ensure that bystanders are at least 15 metres (50 feet) away during use. Replace immediately any worn or broken debris deflector shield or blade cover. If approached, release throttle trigger to immediately de-accelerate the engine to idle.

! WARNING Prolonged use of any hand-held powered machine exposing the operator to vibrations may produce whitefinger disease (Raynaud's) phenomenon or carpal tunnel syndrome. These conditions reduce the hand's ability to feel and regulate temperature, produce numbness and burning sensations, and may cause nerve and circulation damage and tissue necrosis. Extensive hours of continuous use is not recommended.

SAFETY PRECAUTIONS (CONTINUED)

SAFE WORKING INSTRUCTIONS AND IMPORTANT ADJUSTMENTS

Never operate your machine if it is damaged, improperly adjusted or not completely and securely assembled. At correct idle speed, the blade should not turn. Do not use the Atom Edger with incorrect idle speed (refer Adjusting the Carburettor instructions on page 9).

SAFE MAINTENANCE, REPAIR AND STORING

Use only original Atom replacement parts for maintenance and repair. Use of parts manufactured by others will void warranty and/or may cause serious or fatal injury.

! WARNING Always stop the engine, make sure that the blade is stopped, and disconnect the spark plug before adjusting blade height, doing any maintenance or repair work, or cleaning the unit or blade.

Follow the maintenance instructions in the appropriate section of this manual. Any repairs should be carried out by an authorised service dealer or person with suitable servicing experience.

! WARNING A worn or damaged muffler is a fire hazard and may cause loss of hearing. Check to see that the muffler is in good condition. The lawn edger must not be operated if the muffler is not functioning properly, is damaged, or has been removed. In order to reduce the risk of fire, do not modify or remove any part of the muffler and ensure it is not worn or broken.

Remember that the risk of forest or grass fires is greater in hot weather.

Check fuel filler cap for leaks at regular intervals. Use the specified spark plug and make sure it and the ignition lead are always in good condition.

! WARNING Never touch a hot muffler as burns will result.

Store Atom Edger in a dry, high or blocked location and out of reach of children.

! WARNING Never store the machine with gasoline inside a building where fumes may reach an open flame or spark (e.g. gas or oil-fired heater appliance, electric motor, etc.)

Before storing for a longer period, always empty the fuel tank.

! WARNING Start and operate your unit outdoors and in a ventilated area.

Keep the space behind and beside the engine clear at all times to allow for the escape of hot and toxic exhaust fumes.

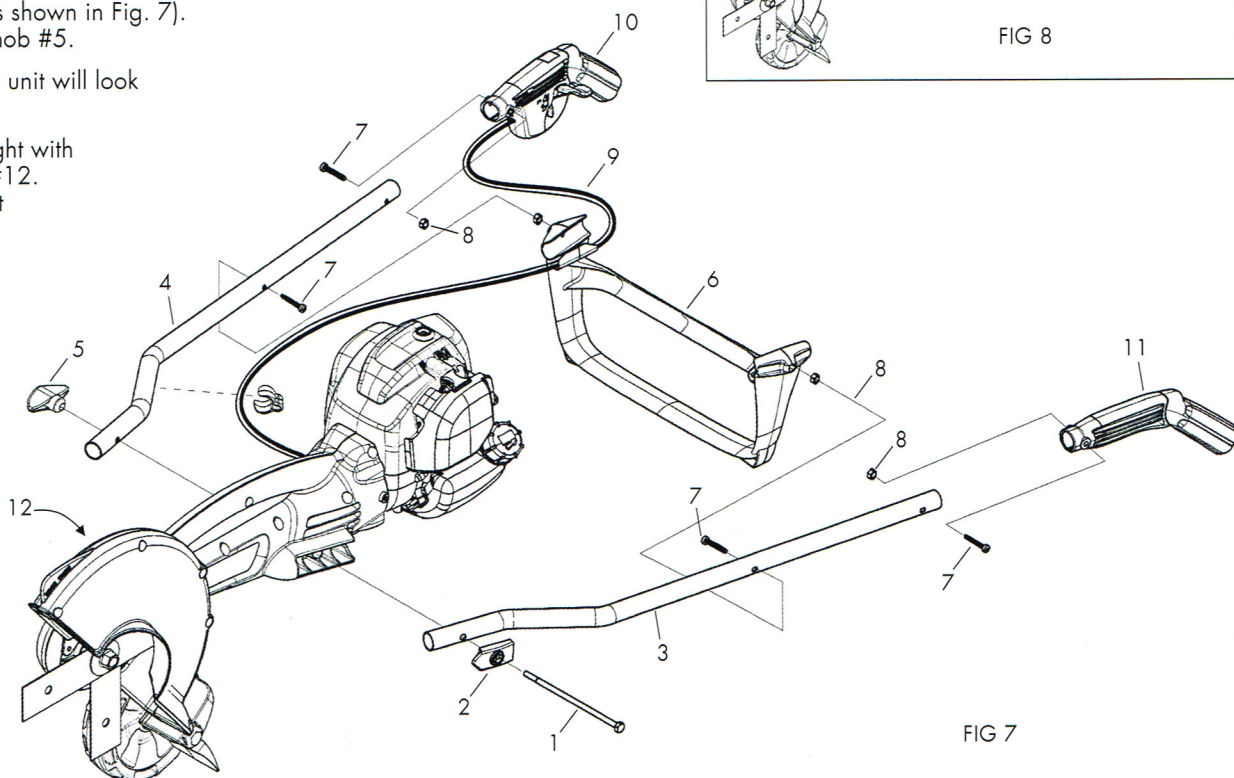
Operate your machine under good visibility and daylight conditions only. Work carefully.

! WARNING The engine exhaust from this product contains chemicals known to the State of California to cause cancer, birth defects or other reproductive harm.

! WARNING Do not touch hot engine during and immediately after use as you may burn yourself.

ASSEMBLING DELUXE ///ATOM® EDGER

1. Fit bolt #1 through captive plate #2 (Note: arrow to front), through handle tube #3, main casing body, then handle tube #4 on other side. Screw on handle knob #5 loosely.
2. Fit cross brace #6 to both handle tubes #3 & #4 using screws #7 and nuts #8.
3. Rest throttle cable and switch wire #9 on top of cross brace #6 and fit RH throttle handle #10 onto end of handle tube #4. Use screw #7 & nut #8 to secure handle. Repeat for left handle #11.
4. Clip throttle cable and switch wire #9 into slot on top of cross brace (as shown in Fig. 7). Tighten handle knob #5.
5. When assembled unit will look like Fig. 8.
6. Adjust edger height with handle adjuster #12. Try hole 3 for first edging attempt.



PARTS & CONTROLS

- 1+2. The handles of the edger are held by both hands.
3. The throttle interlock which releases the throttle trigger which increases the speed of the automatic safety clutch to engage and thus rotate blades.
4. Handle knob for holding handle tubes onto housing.
5. Depth adjustment for adjusting wheel to regulate blade depth.
6. Handle to carry edger.
7. Blade cover reduces the risk of flying debris and direct contact with the feet or hands.
8. Blades rotate when engine speed is increased above idle.
9. Nut for holding blades (RH thread).
10. Wheel for moving and guiding edger.
11. Cross Brace, attaches downward on handle.
12. Handle Tubes.
13. Warning labels.
14. Edge guide.
15. Fuel tank.
16. Carburettor primer.
17. Ignition ON/OFF switch.
18. Fuel tank cap.
19. Choke lever.

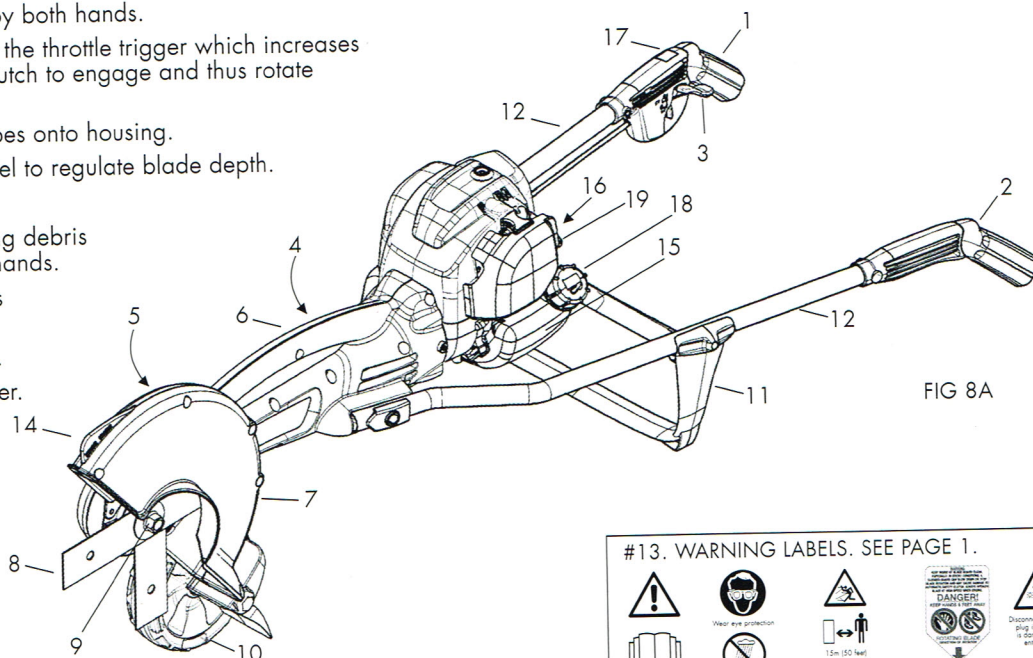


FIG 8A

#13. WARNING LABELS. SEE PAGE 1.



FUELS & OILS

! WARNING DANGER!

Fuel is extremely flammable. Handle it with care. Keep away from ignition sources. Do not smoke while fueling your equipment.

! WARNING Always allow engine to cool before refueling. Accidental spillage of gasoline over a hot engine could cause fire or explosion to occur. Before unscrewing fuel tank cap to fuel the engine, clean the tank's cap and area around it to ensure that no dirt falls into the tank.

! NOTE Use only clean regular or premium unleaded petrol (gasoline) in your 2 or 4-stroke engine.
DO NOT USE ETHANOL BASED PETROL (GASOLINE).

! WARNING Pressure may build up in the canister. Remove fuel cap slowly to avoid injury from fuel spray. Replace fuel cap securely. Take care when handling gasoline. Avoid direct contact with the skin and avoid inhaling fuel vapor.

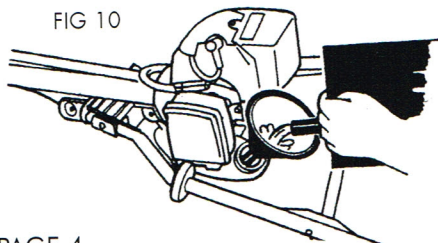
2 STROKE ENGINES

IMPORTANT USE A PETROL AND OIL MIXTURE. Only use 50:1 specialised 2-stroke oils from lawn and garden equipment shops. Do not use outboard engine oil.

REMEMBER...

- Always mix two-cycle oil with clean regular or premium unleaded gasoline before fuelling your engine. Never, ever run your 2-stroke engine on gasoline alone. This will ruin your engine and void all warranties.
- Always use a clean gas can.
- Never try to mix the oil and gasoline in the engine fuel tank.
- Always mix oil and petrol in the proper proportions: 80ml of 50:1 two-cycle engine oil to 4 litres of unleaded petrol.
- Old two-cycle fuel separates and ages. Do not mix more than you will use in a month. Using old fuel may cause difficult starting or engine damage. Shake fuel container to thoroughly mix fuel before each use. Do not attempt to run your engine on gasoline only, this will cause engine failure and void engine warranty.

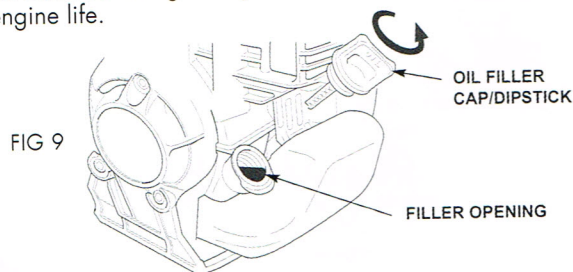
FIG 10



4 STROKE ENGINES

- Use clean, fresh regular or premium unleaded gasoline.
- Check oil level before starting engine. Rest the Edger and engine on a level surface and fill oil reservoir to correct level. Do not overfill, or allow oil level to be below centre of dipstick.
- Use engine manufacturer's recommended clean oil (see separate booklet supplied) or SAE 10-30W synthetic oil. Fill crankcase to correct level.

WARNING Using non-synthetic oil or 2 stroke oil will shorten engine life.



- ALWAYS check your oil level every second or third fuel fill. Regular check of oil levels is essential. Change oil after first hour then every 6 hours. Lack of oil and infrequent change of oil will destroy engine.

! WARNING

Fill or add fuel to the tank only when the edger is in a horizontal position as shown (Fig. 10). Allow engine to cool down for at least 5 minutes before adding fuel. Use a fuel funnel (not supplied) to prevent spills.

STARTING & STOPPING INSTRUCTIONS

Place edger on ground in horizontal position. See Fig. 14 below.

COLD START

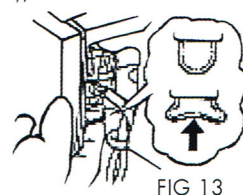
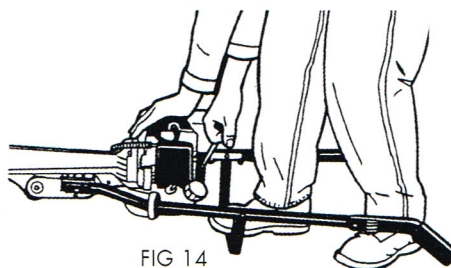
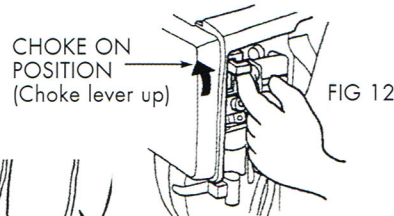
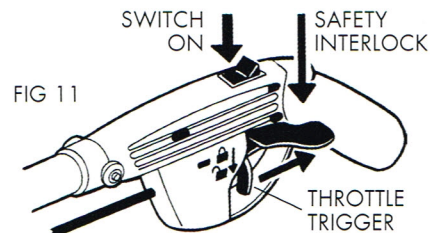
1. Switch engine on (Fig. 11).
2. Slide choke lever up to full choke ON position (Fig. 12).
3. Press and release the primer bulb 10 times (Fig. 13). For first time starting of new unit, press primer bulb twenty times to remove any air from carburettor.
4. Make sure you have a firm footing. With one foot on cross brace, hold down motor with left hand. With right hand pull the starter grip slowly until you feel it engage – and then give it a quick pull (Fig. 14).
5. When engine starts to run allow it to run on half choke for a few seconds to warm up, then push choke off (down) to engine run position.
6. Throttle Trigger (engine accelerator control) is operated by pushing down interlock with thumb and pulling on trigger (Fig. 11).

HOT OR WARM START

7. Switch ignition on and follow instruction 3&4.

FLOODED ENGINE

8. Ignition ON, choke lever OFF in run position.
9. Pull starter rope up to 10 times to clear excess fuel.
10. If engine has excessive fuel that cannot be cleared, remove spark plug from engine and from spark plug terminal, crank engine to clear excess fuel, wipe and dry spark plug of all fuel, re-install spark plug terminal, and restart as above. Otherwise allow to stand for 30 minutes before restarting.



EDGING INSTRUCTIONS

1. The Atom Edger is very easy and simple to use. You will soon become an expert after a few edgings.

2. Thoroughly inspect the area where the edger is to be used and remove all stones, sticks, wires and other foreign objects.

3. Adjust blade height (Fig. 15) and with new blade, try No. 2 position.

4. **Start engine.**

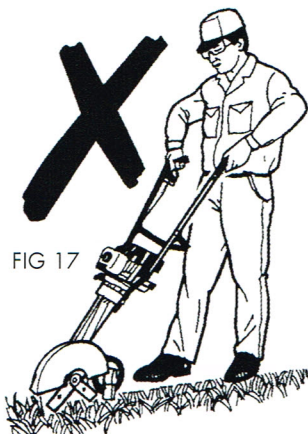
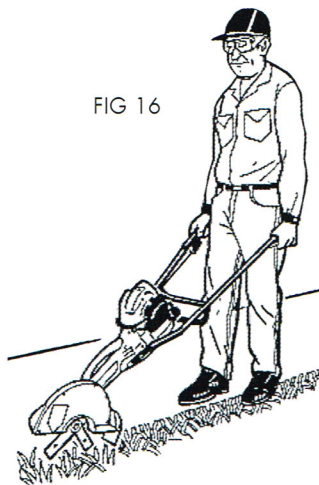
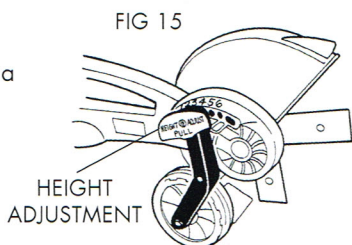
5. **Use both arms extended downwards**, as in Fig. 16, hold both handle grips firmly. Accelerate engine by pushing down safety interlock with thumb and pulling trigger (Fig. 11). Do not overload motor, allow it to run freely. To stop blades rotating, release trigger.

6. If blade is not deep enough, or if digging too deep, adjust blade height, to suit depth required (Fig. 8). **It is always more comfortable and relaxed to have arms fully extended downwards** as shown in Fig. 16 and on front cover illustration.

7. Do not lift handles by excessive bending of elbows (Fig. 17).

8. As cutting action begins, move the lawn edger forward so that the blade can cut the edge as you move forward (Fig. 16 & 18).

9. Continue at a moderate pace until you are familiar with the controls and the handling of the Atom Edger.

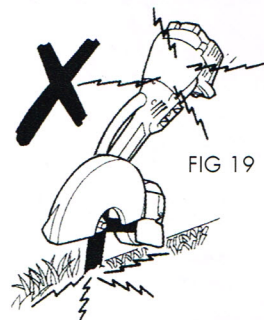
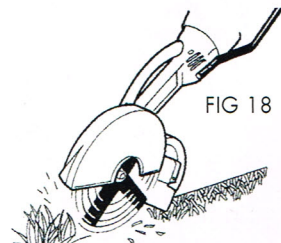


! WARNING Only operate unit when moving forward. **DO NOT** operate walking backward as you may trip, fall and injure yourself.

10. Blade rotating speed should be fast under load. If blade rotates slowly, jams or stops in the ground (Fig. 19), lower handles or release trigger and recommence (Fig. 18).

11. Clutch: The Atom Edger is equipped with a safety clutch. **DO NOT** run edger if blade is jammed, as clutch shoes will prematurely wear and cause damage if cutting blades do not rotate (Fig. 19).

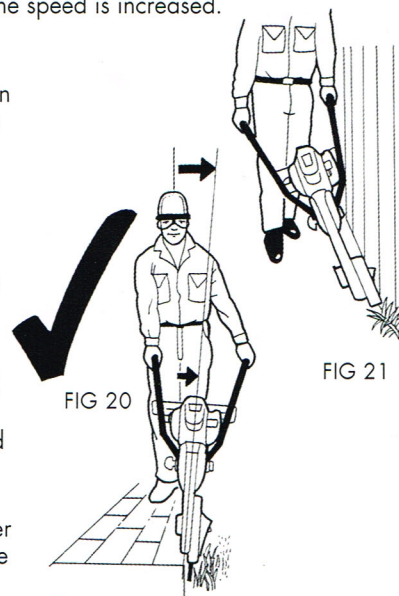
12. Edging along concrete edge: For position of blade, align edge guide (at front of blade cover) with edge of concrete. If blade hits concrete, lower handles and re-position blade at side of concrete.



! NOTE A built in automatic centrifugal clutch disengages the blade from rotating at engine idle speed. the clutch engages the blade when the engine speed is increased.

13. Even with the grass growing over the concrete and you cannot see the edge, you can feel the edge of the concrete with the rotating blades by slightly sideways tilting the handles of the edger away from the concrete so that the blades tilt towards the concrete and skim below the concrete edge which acts as a guide (Fig. 20). Edger blades are made from high tensile hardened spring steel and will last a long time. Once the edge is established the second and subsequent times around are very fast.

14. Sideways Tilting: Lower either left or right handle to achieve angle cutting (Fig. 21).



EDGING INSTRUCTIONS (CONTINUED)

! WARNING To avoid personal injury, never carry the Edger while the motor is running. Never hold the handle cross brace if the motor is running. (Fig. 22) Stop the engine prior to lifting or carrying.

The Lawn Edger can be transported by guiding it on its wheel, or carrying it with motor switched off as in Fig. 23, or carrying with long handle between blade cover and motor.

FIG 22



! NOTE Keep the inside of blade guard clean, especially in muddy conditions. A clogged guard can slow down or stop blade rotation and may cause damage to automatic safety clutch. Always, operate blade at high speed when edging.

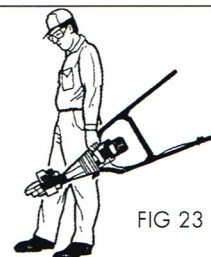


FIG 23

MAINTENANCE INSTRUCTIONS

BLADE REPLACEMENT

1. Use impact driver to undo blade nut, then proceed to instruction 4. Otherwise clean area around dust cover #62936 and pry off with screwdriver (Fig. 24) exposing 14mm hex head (for unscrewing blade nut).
2. Through dust cover hole, place **14MM FULL 6 SIDED 6 pointed socket spanner** (do not use 12 sided 12 pointed socket spanner) over hex head, and use 19mm (or adjustable) spanner on blade nut. (Fig. 25).
3. Unscrew blade nut counter (anti) clockwise (normal right hand thread).
4. Remove nut, one large washer and two blades (Fig. 26). Before installing blade and washers, clean off all grit and grease. Re-assemble these parts clean and dry. Fit large washer, new blades #43105 with spigots of one blade interlocking with holes on opposite blade, large washer and nut. Tighten nut to 15-20ft.lbs. (20-27Nm) or hand tight with 8" (200mm) or longer spanner.

FIG 24

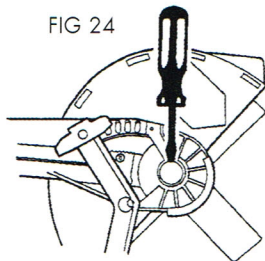


FIG 25

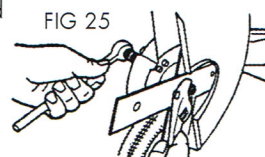
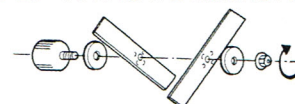


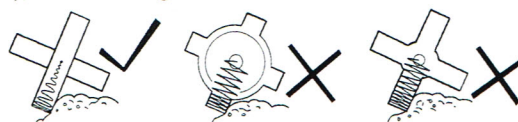
FIG 26 FITTING INSTRUCTIONS

FIT BLADES AT RIGHT ANGLES
2 SPIGOTS ON EACH BLADE
FIT INTO HOLES OF OTHER BLADE



! WARNING USE ONLY ORIGINAL ATOM BLADES #43105. Other blades have larger size holes (1/2") which will cause out-of-balance vibrations which will damage unit and cause injury. Other blades can also break and cause major injury. Circular blades must not be used. Only use ORIGINAL Atom blades otherwise warranty is VOIDED.

! NOTE Always use two blades as shown above. Never use a single blade. Do not use other thicker blades as you will damage the unit.



Hardened Atom spring steel cross blades absorb shock when rocks and hard objects are hit, ensuring long edger life.

Non-Atom edger blades do not absorb shock due to solid stiff construction. Gear and edger life is reduced. NO WARRANTY allowed if damage to Atom unit caused by use of non genuine Atom parts.

AIR FILTER MAINTENANCE ON HONDA

! NOTE Clean and re-oil the air filter every five hours of operation or daily.

1. The air filter (Fig. 27) is one of the most important areas to maintain. If it is not maintained, you will void the warranty. Before cleaning, make sure the unit is turned off.
2. If filter torn or dirty replace.
3. Wash the filter in detergent and water (Fig 28). Rinse the filter thoroughly and allow it to dry.
4. Apply enough clean SAE 30 or 2-stroke oil to saturate the filter when squeezed. Squeeze the filter to spread the oil and to remove excess oil. Re-install the filter element.

FIG 27

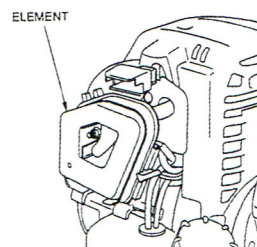
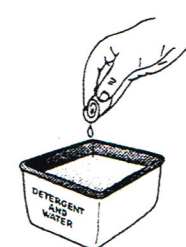


FIG 28



! NOTE If the unit is operated with dry or dirty filter or without the air filter and/or carburetor air filter cover, you will void the warranty.

AIR FILTER MAINTENANCE ON ATOM TURBO ASSIST (PAT. PENDING)

Only required every 30 hours of use. Remove 2 cover screws and lift off cover. Remove filter sponge element, squeeze out all oil, refill sponge, and screw cover on. Compressed air may also be CAREFULLY used to blow through fine filter mesh when sponge is out.

TROUBLESHOOTING TIPS

PROBLEM	CAUSE	ACTION
1. Blades do not turn when operating	Loose blade nut or incorrect assembly.	Tighten blade nut (or add washer under nut).
	Blade cover filled with dirt/grass/mud.	Clean.
	Blade stops under load when blade depth is too low.	Cut less depth.
	Clutch slipping.	Cut less depth or clean.
2. Motor lacks power or blade stops rotating	Cutting too deep.	Raise cutting depth and see (1) above.
3. Heavy vibration	Wrong blade fitted.	Only use ORIGINAL Atom blade set #43105
	Worn clutch or clutch drum or damaged drive.	Take to service dealer.
4. Engine will not run or runs and stops	Ignition switch is OFF.	Turn switch on.
	Choke ON.	Push choke to OFF position.

///ATOM® DELUXE EDGER PARTS LIST

DELUXE MODEL 450 GREEN 2 STROKE • DELUXE MODEL 440 RED 4 STROKE

KEY#	PART NO.	DESCRIPTION
1	40650	SCREW M5 X 36
3	40651	SCREW M6 X 16
4	40652	NUT NYLOC 5MM
5	42111	WHEEL SEAL 27.2 X 12.6
6	43105	BLADE (SET OF 2) 10.7"(271 MM)
7	43112	BLADE DRUM
8	43114	BLADE SHAFT DRIVE
9	43128	WARNING LABEL BLADE COVER
10	43172	NUT NYLOC 3/8" UNC
11	43198	TRIGGER COMP. SPRING
12	43199	SPRING SMALL
13	43218	3/8" FLAT WASHER
14	43227	GREASE
15	43245	CROWN GEAR WITH BUSH
16	43452	HT. ADJ. COMP. SPRING
17	43719	DEBRIS DEFLECTOR SPRING
18	43790	SCREW M5.5 X 22MM
19	43860	BEARING 32 X 10 X 12 +4MM
21	44060	HANDLE TUBE
22	44302	HEIGHT ADJ. ARM PIN
23	44304	WHEEL AXLE BOIT 3/8" X 5.5"
24	44305	WHEEL BEARING 28 X 8 X 12.8MM
25	44318	CLUTCH DRUM CUP 54MM
26	48004	ENGINE HONDA GX25
27	48101	OIL HONDA-80ML
28	62843	HEX BOIT 3.5 X 1/4 BSW
29	62912	FLANGE DRUM HUB
30	62917	EDGER GEAR SEAL
31	62919	NUT NYLOC 1/4" UNC
32	62925	SHAFT MAIN DRIVE
33G	63897GP	LH-RH GREEN EDGER BODY SET WITH #4(x2)
34R	63897RP	LH-RH RED EDGER BODY SET WITH #4(x2)
35	63808A	BLADES COVER SET
36	62929WP	DEBRIS DEFLECTOR
37	62930WP	DEBRIS DEFLECTOR LIMITER BODY
38	62931WP	DEBRIS DEFLECTOR LIMITER CAP
39	62932WP	HEIGHT ADJ. HANDLE
40	62933WP	WHEEL ARM EDGER
41	62934	TUBE WHEEL 94MM
42	62936WN	DUST CAP EDGER
43	62944	NUT MB 1.25 ZP
44	62968	CABLE CONNECTOR

KEY#	PART NO.	DESCRIPTION
45	62983	HARDENED WASHER 45 X 12.2 X 2
46	63405	ENGINE ATOM 26CC FCS
47	63002	THROTTLE CABLE 910+58
48	63017BS	HANDLE RH WITH RUBBER
49	63019BS	HANDLE LH WITH RUBBER
50	63020BE	CROSS BRACE
51	63021BP	COVER TRIGGER
52	63883A	TRIGGER THROTTLE + INTERLOCK SET
53	43966RN	AIR DEFLECTOR HONDA GX 25
54	63026	MANUAL DELUX 440+450
55	63032	NUT FLANGE 3/8 UNC
56	63033	NUT RECESSED M12 X 1.75MM
57	63049	BOIT HEX 6.5 X 1/4" BSW
58	63187BN	CAPTIVE PLATE 1/4" HEX PIECE
59	63488A	HANDLE KNOB (WITH 44006 NUT)
60	63217BN	CABLE CLIP
61	63277	CLUTCH WASHER
62	63327	WASHER 26 X 6.5 X 1.6
63	63348	O'RING
64	63355	TERMINAL GROUND HONDA
65	63806RN	MOUNT RING+GX 25 AIR COWL
66	43765	WHEEL WITH TYRE
67	63388	PINION GEAR 3/8" UNC
68	63400	SWITCH, ON/OFF ROCKER WITH WIRES
69	63407	LABEL-ATOM LAWN EDGER
70	63457	WASHER 1/4 X 1/2 X 1.6
71	63466	LABEL-HANDLE
72	63474	BEARING 32 X 10 X 12
73	63533BE	CABLES HOOK
74	43181	SCREW M5 X 12
☆ SERVICE ASSEMBLIES We recommend factory produced assemblies for replacements as they are more economical by substantially reducing labour costs and time to repair.		
☆201	63433A	ASSY HANDLE RH+RUBBER WITH #11, 12, 18, 47, 48, 51, 52, 68
☆202	63811AWP	ASSY HEIGHT ADJ. ARM GREY DELUXE/DOM/EL WITH #1, 16, 22, 39, 40
☆203	63943A	ASSY DELUXE TYRED WHEEL WITH #5, 24(x2), 41, 66

KEY#	PART NO.	DESCRIPTION
☆204	63436AWP	ASSY DELUXE WHEEL ARM GREY COMPLETE WITH # ☆202, ☆203, 10, 13(x3), 17, 23, 36, 37, 38
☆205	63447A	ASSY MAIN SHAFT DELUXE/DOM/EL WITH # 25, 29, 32, 55, 61, 67, 72(x2)
☆206G	63434AGP	ASSY DELUXE/DOM/EL EDGER BODY GREEN WITH # ☆205, 1(x2), 3, 4(x2), 7, 8, 15, 18(x11), 19(x2), 30, 33G, 73
☆207R	63434ARP	ASSY DELUXE/DOM/EL EDGER BODY RED WITH # ☆205, 1(x2), 3, 4(x2), 7, 8, 15, 18(x11), 19(x2), 30, 34R, 73
☆208	48004A	ASSY ENGINE HONDA GX25 WITH #1, 26, 43, 44, 53, 64, 65, 74
	63882A	ASSY 450 GREEN DELUXE MAIN BODY WITHOUT ENGINE WITH # ☆204, ☆206G, 1(x2), 3, 7, 9, 18(x16), 28, 31, 35, 42, 45(x2), 56, 62, 63(x2), 70(x3)
	63896A	ASSY 440 RED DELUXE MAIN BODY WITHOUT ENGINE WITH # ☆204, ☆207R, 1(x2), 3, 7, 9, 18(x16), 28, 31, 35, 42, 45(x2), 56, 62, 63(x2), 70(x3)
For engine parts list and exploded views refer to www.atomindustries.com.au		

WARRANTY FOR ATOM DELUXE EDGERS

Original sales docket must be shown as proof and date of purchase. Warranty exclusions: Not using genuine Atom replacement parts. eg Atom blades, etc; not following operator manual instructions, accidental damage, not following service instructions, normal wear and tear, abuse and rough handling.

Home Owner Warranty: 12 months for parts and labour from date of purchase.

Commercial Warranty: 3 months for parts and labour from date of purchase.

///ATOM®

Premium Technology & Unrivalled Endurance

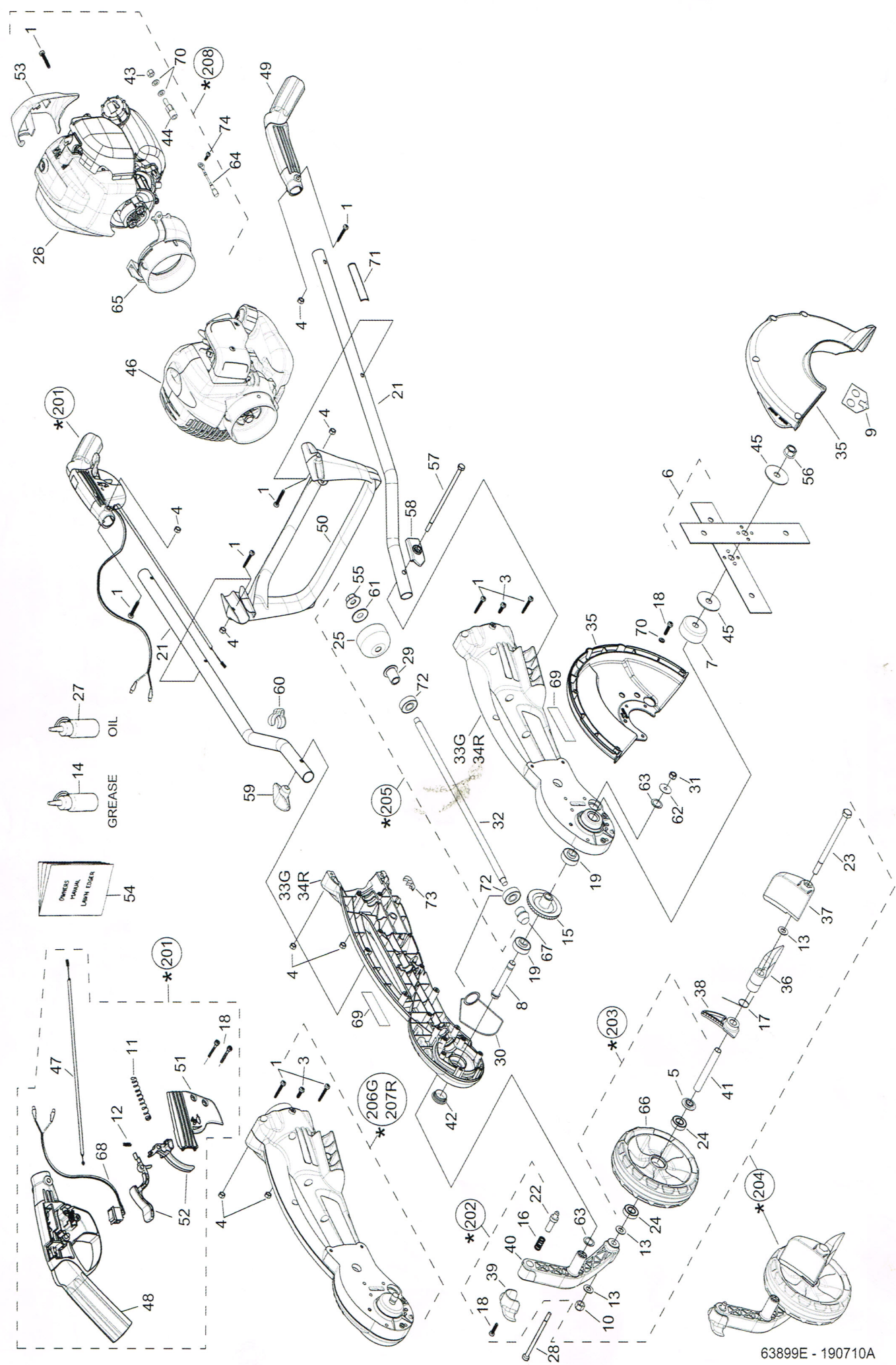
ATOM INDUSTRIES

9 Fred St. Lilyfield 2040 Sydney Australia
Tel: +61(0)2 9810 0194 Fax: +61(0)2 9810 6691
Email: sales@atomindustries.com.au
www.atomindustries.com

ATOM INDUSTRIES (NZ) Limited

FREECALL 0800 174 753 Fax: 0800 603 403
Email: sales@atomindustries.com.au
www.atomindustries.com

///ATOM[®] DELUXE DOMESTIC EDGERS • MODEL 450 GREEN 2-STROKE • MODEL 440 RED 4-STROKE



///ATOM®

Premium Technology & Unrivalled Endurance

**MULTI INTERNATIONAL GOLD MEDALS
& AWARD WINNING LAWN EDGERS**



**Operator /
Owner Manual**

63026

DOMESTIC DELUXE LAWN EDGERS **2 and 4 Stroke Engines**

ACN 000 583 924

- Safety Precautions • Assembling • Service
- Operating and Edging Instructions

Important Manual – Do Not Throw Away

Manual always to be available for reference or instructing new operators.

Introduction: Gasoline Lawn Edger

This Atom Gasoline Powered Edger is designed to the highest standards to ensure you many hours of uninterrupted service. Pay special attention to the safety precautions. Only persons who understand this Manual are to operate the Edger.

To receive maximum performance and satisfaction from your Edger, it is important that you read and understand the maintenance and safety precautions before using the unit. Contact your Atom dealer or the Atom distributor in your area if you do not understand or cannot carry out any of the operating instructions in this Manual.

Atom's philosophy is to continually improve all of its products. As a result, engineering changes and improvements are made from time to time. Appearances may differ between models. This manual covers information required to operate, maintain and service this Atom Lawn Edger.

AS WITH ANY POWER TOOL IMPROPER USE CAN CAUSE SERIOUS INJURY. Make sure this manual is read and carefully understood before starting or operating this equipment.

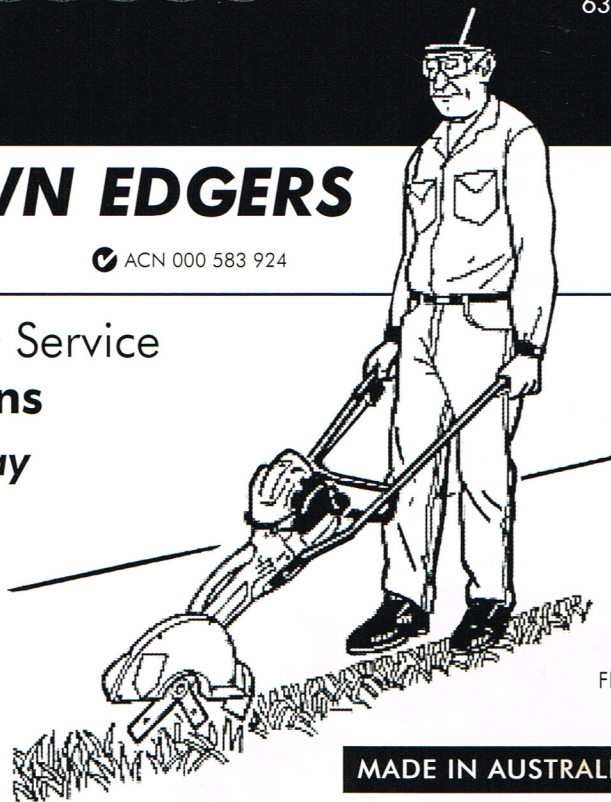


FIG 1

MADE IN AUSTRALIA

Contents

	PAGE
Safety Warning Labels	1
Safety Precautions	2 - 3
Assembling the Edger	3
Parts and Controls	4
Fuels and Oils	4
Starting and Stopping Instructions	5
Edging Instructions	5
Maintenance Instructions	5
Troubleshooting Tips	6
Parts List and Parts Illustration	7-8

! SAFETY WARNING The purpose of Safety Warnings and Notes in this Manual is to attract your attention to possible dangers and deserve your careful attention and understanding. The Safety Warnings in this Manual and on the Edger do not, by themselves, eliminate any danger. The instructions or warnings they give are not substitutes for proper accident prevention measures.

! WARNING Failure to obey a safety warning can result in injury to yourself and others.

! NOTE Advises you of information or instructions vital to the operation or maintenance of the equipment.

The information contained in this manual is also available at **www.atomindustries.com**

FIG 2 SAFETY WARNING LABELS



Read operators manual



Wear eye protection

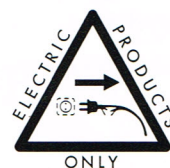


1.5m (50 feet)

Keep bystanders away



Blade cover label



Disconnect the mains plug if the cord is damaged or entangled