

GENERAL PURPOSE ENGINE

GCV160LE

PARTS CATALOGUE

1

FOREWORD INDEX

1

ENGINE GROUP

2

PART NUMBER INDEX

3

PART NAME INDEX

4

Instruction for use of parts catalogue

- **This parts catalogue was prepared based on the latest information available as of October 04, 2006.**
- See the parts catalogue news for any revision that is made after October 04, 2006.
- **Always specify the part number when ordering a part.**
 - Check the model, type, serial numbers, color, maker, and the size as needed before ordering a part.
 - Note that the illustrations (part drawings) can differ from the actual parts in shape. They are given just to help you to refer to the parts.
- **When modifications or additions to this parts catalogue are made, a revised edition will be issued at an appropriate time, with successively progressing revision numbers on the cover. We recommend obtaining such revisions in order to keep your parts catalogue up-to-date at all times. To check whether a parts catalogue revision has been issued, please contact your Honda distributor.**

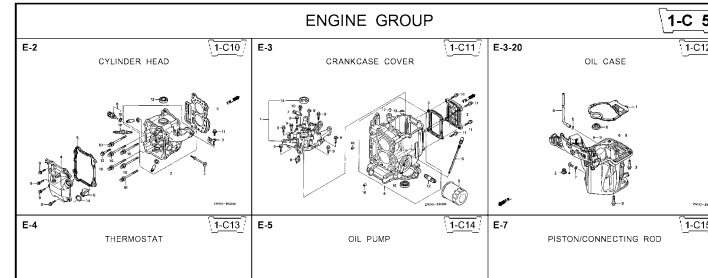
Initial version issue date **October 04, 2006**
Honda Motor Co., Ltd.

CONTENTS

	Page	Address No.	
● Instruction for use of parts catalogue	1	B 1	1
● How to refer to the part information	2	B 2	
● Part catalogue structure	3	B 3	
● When the parts were revised.....	4	B 4	
● Abbreviations used in the parts catalogue.....	4	B 4	
● How to check the part block and serial numbers.....	5	B 5	
● Models, parts catalogue codes and applicable serial numbers	6	B 6	
● Features of each type.....	6	B 6	
● Fuel hose, general purpose hoses and vinyl hose.....	7	B 7	
● Illustrated index	8	B 8	
● ENGINE GROUP.....	10	C 1	2
● PART NO. INDEX.....	24	D 1	3
● PART NAME INDEX.....	25	E 1	4

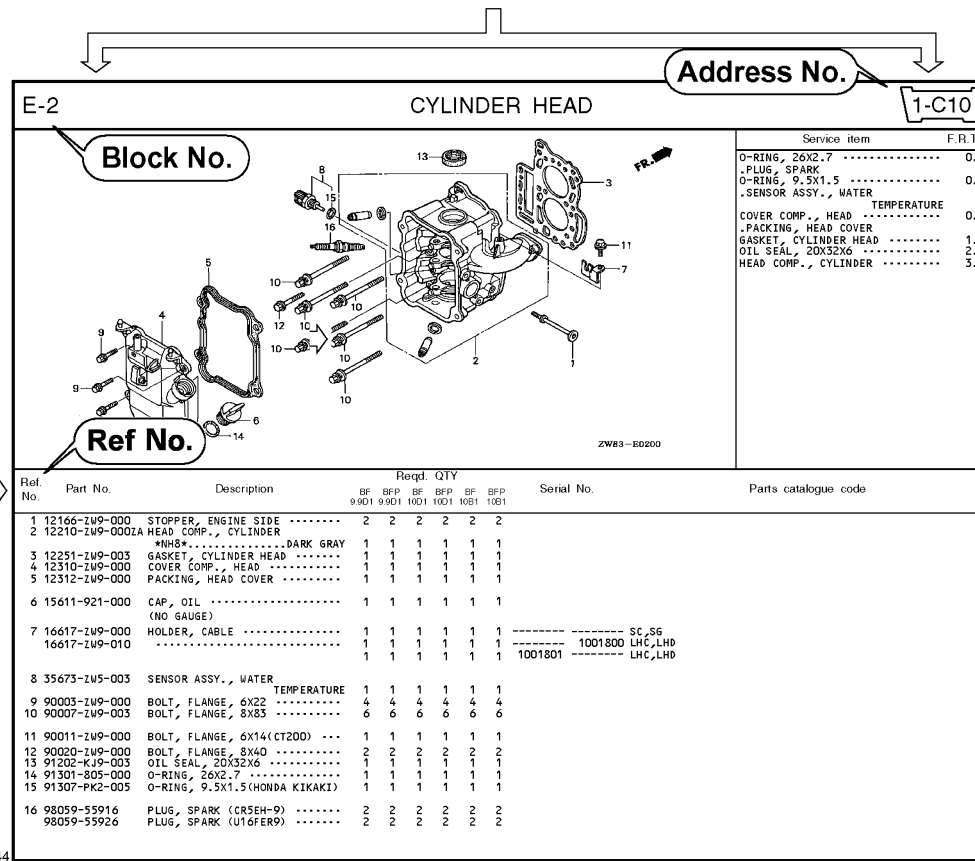
How to refer to the part information

A Reference with "Illustrated index"



B Reference with "Part number index"

PART NO. INDEX					
Part Number	Address	Page	Rel.	Part Number	Address Page
06000				15212-ZW9-000	1-C14 3C
06316-ZW9-000	1-69	88	1	15220-ZW9-003	1-C14 3C
11000				15332-ZW9-000	1-E8 55
11300-ZW9-405	1-C11	27	1	15332-ZW9-A30	1-E11 58
11300-ZW9-406	1-C11	27	1	15400-PFB-004	1-C11 27
11340-ZW9-000	1-C11	27	2	15422-ZW9-000	1-C14 3C
11342-ZW9-000	1-C11	27	3	15473-881-000	1-C14 3C
11381-ZW9-003	1-C12	28	1	15474-ZW9-000	1-C14 3C
				15611-921-000	1-C10 2E
				15655-ZW9-000	1-C11 27
				16000	
12000				16010-ZV4-005	1-D4 3E
12000-ZW9-405ZA	1-C11	27	4	16011-ZV4-005	1-D4 3E
12155-ZV4-A00	1-C13	29	1	16013-ZW9-003	1-D4 3E
12166-ZW9-000	1-C10	26	1	16016-ZW9-003	1-D4 3E
12209-GB4-681	1-C16	32	1	16016-ZW9-721	1-D4 3E
12210-ZW9-405ZA	1-C10	26	2	16023-ZW9-003	1-D4 3E
12216-ZE2-300	1-E8	55	1	16024-ZV4-650	1-D4 3E
	1-E11	58	1	16028-ZV4-650	1-D4 3E



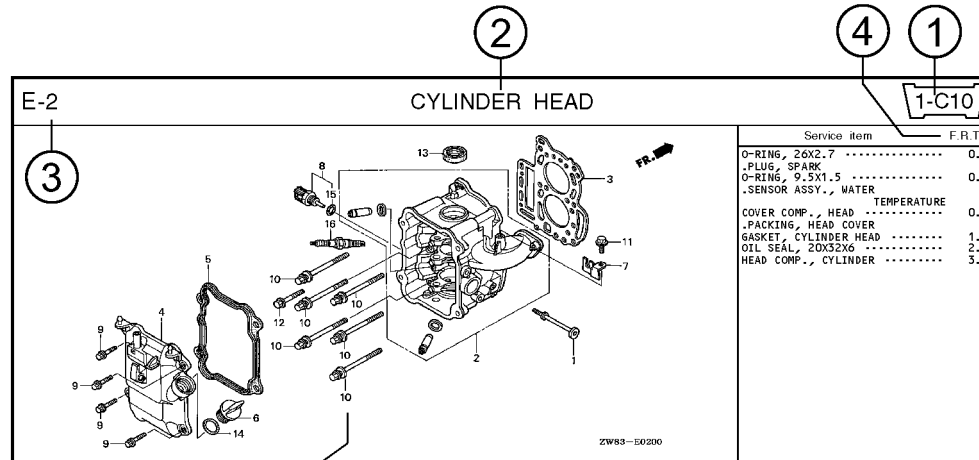
C Reference with "Part name index"

PART NAME INDEX					
Part name	Address	Page	Ref.		
[A]					
ABSORBER, FUEL	1-E15	62	5	BOLT,	
ARMATURE COMP.	1-D11	43	7	BOLT,	
ARM COMP., LINK JOINT	1-G6	85	18	BOLT,	
ARM COMP., SHIFT LINK	1-G6	85	14	BOLT,	
ARM COMP., TILT	1-F15	79	20		
ARM, FUEL PUMP ROCKER	1-C16	32	4		
ARM, REVERSE LOCK	1-F15	79	18		
ARM, SHIFT LINK	1-F11	74	7		
ARM, STOPPER	1-D1	33	12	BOLT,	
ARM, THROTTLE REMOTE	1-F11	74	6		
ARM, VALVE ROCKER	1-C16	32	3		
[B]					
BAG, TOOL, 160MM	1-G5	84	10		
BAND	1-G6	86	37		
BAND B1, WIRE	1-F6	69	1		
BAND, CORD	1-F3	67	18	BOLT,	
BAND, TUBE CLIP, 11MM	1-E15	63	20		
BAND, TUBE CLIP, 12.5MM	1-E15	63	19	BOLT,	

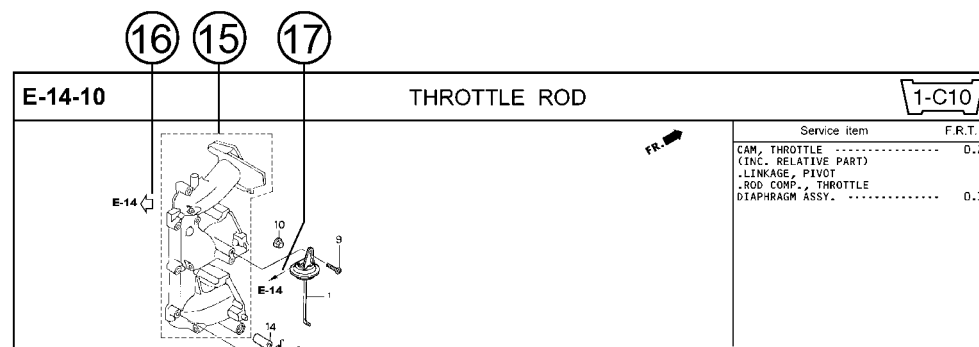
Page No.

2006.09.20 E

Part catalogue structure



Ref. No.	Part No.	Description	Reqd. QTY						Serial No.	Parts catalogue code
			BF 9/901	BFP 9/901	BF 1001	BFP 1001	BF 1081	BFP 1081		
1	12166-zw9-000	STOPPER, ENGINE SIDE	2	2	2	2	2	2		
2	12210-zw9-000ZA	HEAD COMP., CYLINDER *NH8*	1	1	1	1	1	1		
3	12251-zw9-003	GASKET, CYLINDER HEAD	1	1	1	1	1	1		
4	12310-zw9-000	COVER COMP., HEAD	1	1	1	1	1	1		
5	12312-zw9-000	PACKING, HEAD COVER	1	1	1	1	1	1		
6	15611-921-000	CAP, OIL (NO GAUGE)	1	1	1	1	1	1		
7	16617-zw9-000	HOLDER, CABLE	1	1	1	1	1	1	SC,S6	
	16617-zw9-010		1	1	1	1	1	1	1001800 LHC,LHD	



① Address number

- Address No. is provided (in place of the page No.) to help you refer to the part with the part No. or part name.

② Block title ③ Block number

④ Service item/Flat rate time

⑤ Reference number

- Title number marked with the parenthesis or parentheses indicates that it continues from the previous page.

⑥ Part number ⑦ Honda color code

⑧ Description

⑨ Assemblies

- Sections framed with broken lines in the exploded view drawings are available as complete assemblies. (Their individual parts can also be obtained.)

⑩ Color description

⑪ Note

- Notes are shown with the parentheses in the part name column.

⑫ Required quantity

- Required QTY shown in the parenthesis or parentheses indicates the optional part.
- Required QTY marked with "N" Indicates the optional part that should be selected as needed.
- Required QTY indicates the number of the part used in the block.

⑬ Serial number

⑭ Type

- When the type column is blank, it indicates that the part is applicable to all types.
- As the type of the actual unit may differ from the "parts catalogue, type" please refer to "Models, types and applicable serial numbers" for confirmation.

⑮

- Parts enclosed within a dotted line are covered in a different block.

⑯

- A hollow arrow indicates the block No. for the parts enclosed within a dotted line .

⑰

- A solid arrow indicates the block No. the part in question is connected to.

When the parts were revised

Abbreviations used in the parts catalogue

1



Be sure to check the serial number!!



Ref. No.	Part No.	Description	Reqd. QTY						Serial No.
			BF 99D1	BFP 9.9D1	BF 10D1	BFP 10D1	BF 10B1	BFP 10B1	
1	12166-ZW9-000	STOPPER, ENGINE SIDE	2	2	2	2	2	2	
2	12210-ZW9-000ZA	HEAD COMP., CYLINDER *NH8*.....DARK GRAY	1	1	1	1	1	1	
3	12251-ZW9-003	GASKET, CYLINDER HEAD	1	1	1	1	1	1	
4	12310-ZW9-000	COVER COMP., HEAD	1	1	1	1	1	1	
5	12312-ZW9-000	PACKING, HEAD COVER	1	1	1	1	1	1	
6	15611-921-000	CAP, OIL (NO GAUGE)	1	1	1	1	1	1	
7	16617-ZW9-000	HOLDER, CABLE (###).....	1	1	1	1	1	1	SC, SG 1001800 LHC, LHD 1001801 LHC, LHD
	16617-ZW9-010	1	1	1	1	1	1	

The number has been used from the initial model without revision.

When shown at the left side, it is applicable to the models of No.1001801 and the subsequent numbers.

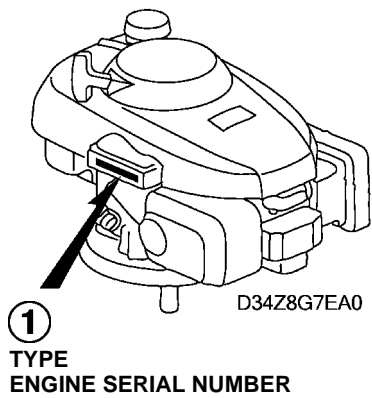
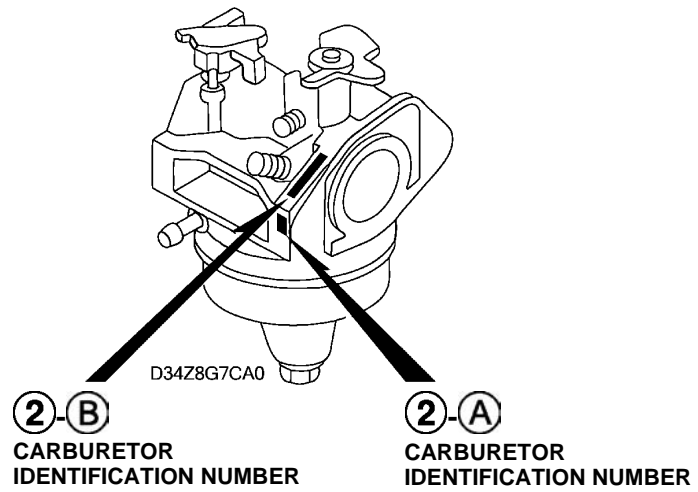
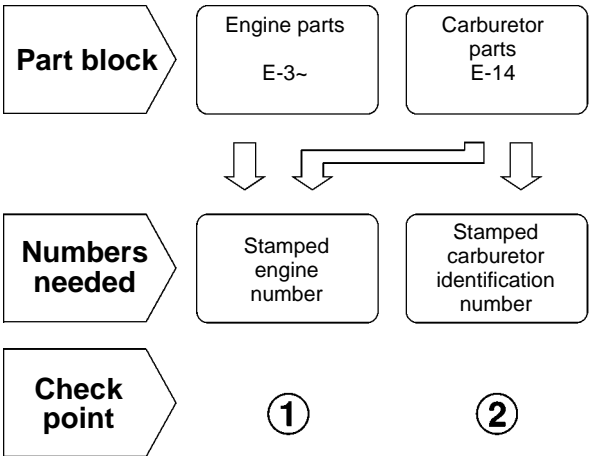
When shown at the right side, it is applicable to the models up to No.1001800.

• The parts listed with "###" at the end of the parts name have limited supply period (parts not for sale).

• The following abbreviations are used in the parts name column.

- | | |
|--|-----------------------------|
| A Ampere | FR.Front |
| A.C. Alternating current | IN.Inlet |
| ASSY. Assembly | L (100L) .Link (100 Links) |
| AT. Automatic transmission | L.Left |
| C.D.I. Capacitive discharge ignition | MMMillimeter |
| COMP. ... Complete | MT.Manual Transmission |
| D.C. Direct current | P.T.O.Power take off |
| EX. Exhaust | R.Right |
| G.F.C.I ... Ground fault circuit interruptor | RR.Rear |
| HEX. Hexagonal | STD.Standard |
| H.S.T. Hydrostatic transmission | T (22T) ...Tooth (22 Teeth) |
| | V Volt |
| | WWatt |

How to check the part block and serial numbers



Models, parts catalogue codes and applicable serial numbers

- Models, parts catalogue codes and applicable serial Nos. given in this parts catalogue can be identified as follows.

Model	Type	Parts catalogue type	Applicable engine serial No.	Applicable carburetor identification No.
GCV160LE	A2A9	A2A9	GJAAE-1000001~	BB62W <u>A</u>
	N7A1	N7A1		BB62Y <u>A</u>

* Of carburetor identification numbers, only the portions underlined in the example below are used for registration.

BB 62W A KC ナ
 (A) (B)

Features of each type

- See the following table for the features of each type. (Items in brackets are optional)

Specifications	Model Type	GCV160LE	
		A2A9	N7A1
Crankshaft	22.2mm Ø Straight (Depth 24mm)	●	
	22.2mm Ø Straight (Depth 52mm)		●
Recoil starter			●
Recoil starter (Long rope)		●	
Flywheel brake		●	

Fuel hose, general purpose hoses and vinyl hose

- The standard part fuel hose, general purpose hose and vinyl hose may be substituted by the coiled bulk part.
- When ordering the standard part fuel hose, general purpose hose and vinyl hose use the bulk part number written in the parts catalog in brackets () underneath the part name.
- When exchanging the hose, cut and use at the specified length as mentioned in the part name.
(For the method of cutting the bulk part, and method of filling out orders etc., please refer to the instructions issued with the bulk part.)

Bulk part number of fuel hose, general purpose hose and vinyl hose.

Example: 9 5 0 0 1 - 7 5 0 0 1 - 5 0 M

Bulk part number:
Refers to the bulk part.

Marking code (fuel hose and general purpose hose)

Change code (Vinyl hose)

Indicates number mark or change sequence, however, the code for the bulk part must be strictly 0 (zero).

Types of code:

- Fuel hose
 - 2: Red outside braid (3 mm inside dia. only)
 - 5: Black inside braid
 - 3: Red (3 mm inside dia. only)
 - 4: Ash gray with red stripe (3 mm inside dia. only)
 - 6: Black

- General hose
 - 1: Ash gray
 - 2: Ash gray
 - 3: Black
 - 5: Black

- Vinyl hose
 - 1: Clear
 - 2: Black
 - 3: Light red
 - 6: Light red
 - 7: Pale black

Lengths:

- 001: 1 m (standard)
 - 003: 3 m
 - 008: 8 m
- Application or specification of some parts is not settled.

I.D code: (fuel hose and general purpose hose)

- | | | | | |
|------------|--------------------|--------------------|-----------------------------|-----------------------------|
| 30: 3.0 mm | 50: 5.0 mm | 70: 7.0 mm | 11: 11 mm | 12: 12 (outside dia. 17) mm |
| 35: 3.5 mm | 55: 5.3 mm, 5.5 mm | 75: 7.3 mm, 7.5 mm | 91: 12 (outside dia. 15) mm | 14: 14 mm |
| 45: 4.5 mm | 65: 6.5 mm | 80: 8.0 mm | 92: 12 (outside dia. 16) mm | 17: 17 mm |

ID./OD. code: (vinyl hose)

- | | | | | |
|-------------------------|--------------------------|---------------------------|---------------------------|---------------------------|
| 01: ID. 2.9, OD. 6.8 mm | 12: ID. 5.0, OD. 7.0 mm | 21: ID. 8.0, OD. 9.0 mm | 37: ID. 11.0, OD. 15.0 mm | 50: ID. 16.0, OD. 19.0 mm |
| 03: ID. 3.0, OD. 6.0 mm | 10: ID. 5.0, OD. 8.0 mm | 23: ID. 8.0, OD. 12.0 mm | 38: ID. 12.0, OD. 13.0 mm | 55: ID. 17.5, OD. 20.5 mm |
| 05: ID. 3.5, OD. 6.5 mm | 11: ID. 5.0, OD. 9.0 mm | 25: ID. 9.0, OD. 11.0 mm | 39: ID. 12.0, OD. 14.0 mm | 60: ID. 22.0, OD. 27.0 mm |
| 07: ID. 4.0, OD. 7.0 mm | 14: ID. 6.0, OD. 9.0 mm | 27: ID. 9.0, OD. 13.0 mm | 40: ID. 12.0, OD. 16.0 mm | |
| 08: ID. 4.5, OD. 6.5 mm | 17: ID. 7.0, OD. 9.0 mm | 33: ID. 10.0, OD. 14.0 mm | 43: ID. 13.0, OD. 15.0 mm | |
| 09: ID. 4.5, OD. 8.0 mm | 19: ID. 7.0, OD. 11.0 mm | 36: ID. 11.0, OD. 13.0 mm | 45: ID. 14.0, OD. 18.0 mm | |

Hose type:

- 1: Fuel hose
- 3: Vinyl hose
- 5: General hose

⊙ **CAUTION: It is DANGEROUS to confuse the fuel hose with the general purpose hose or vinyl hose.**

Never use a general purpose hose or vinyl hose in place of a fuel hose or vice versa. Always use the correct bulk part in the parts catalogue, according to the service manual or the instructions issued with the bulk part.

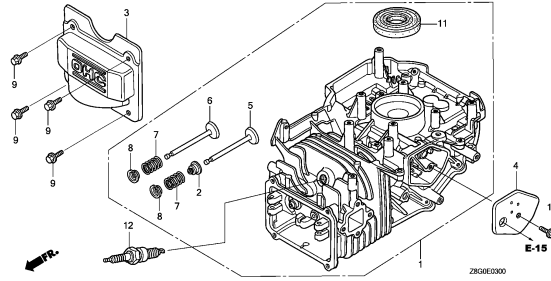
ENGINE GROUP

B 8

E-3

CYLINDER BARREL

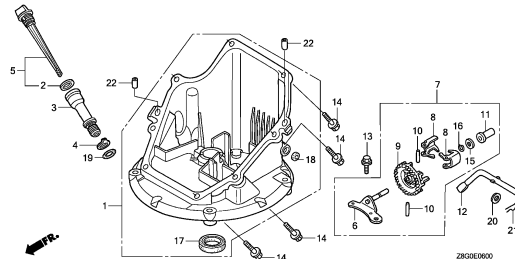
C 1



E-6

OIL PAN

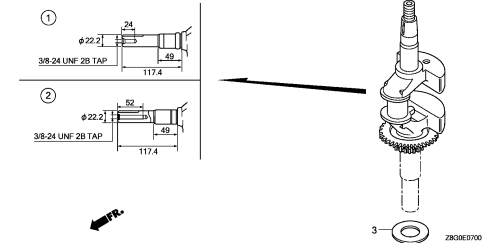
C 2



E-7

CRANKSHAFT

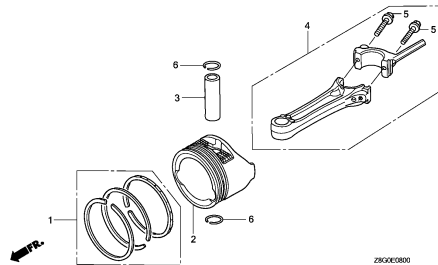
C 3



E-8

PISTON/CONNECTING ROD

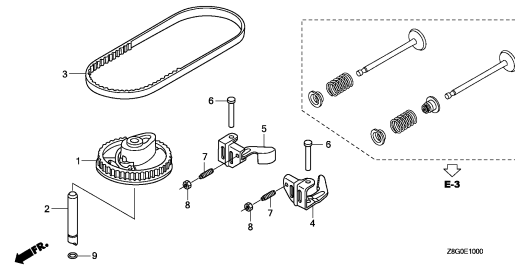
C 4



E-10

CAMSHAFT PULLEY

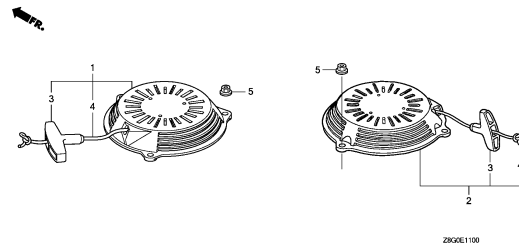
C 5



E-11

RECOIL STARTER

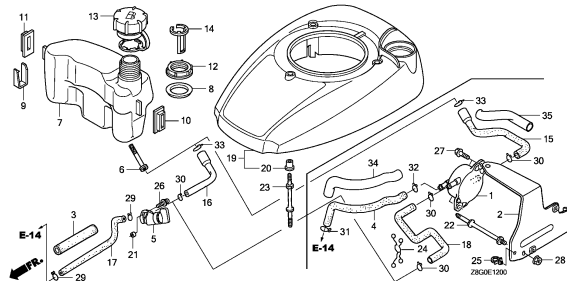
C 6



E-12

FAN COVER

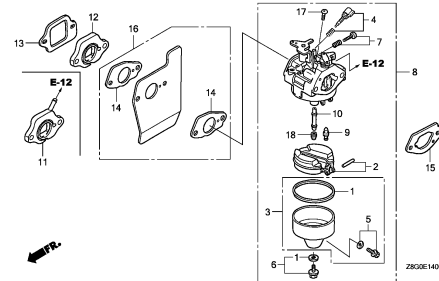
C 7



E-14

CARBURETOR

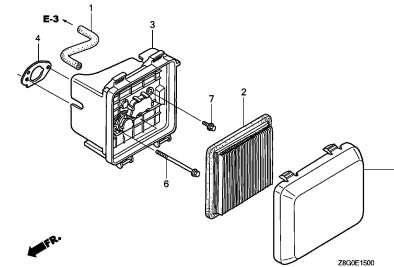
C 9



E-15

AIR CLEANER

C10



2

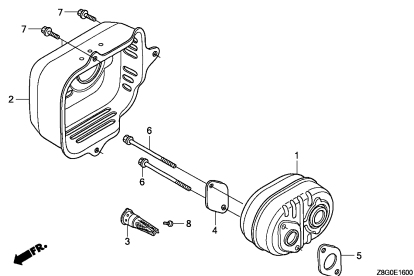
ENGINE GROUP

B 9

E-16

MUFFLER

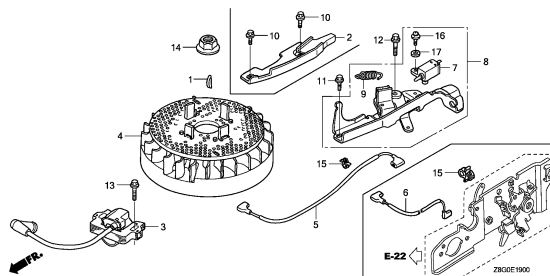
C11



E-19

FLYWHEEL

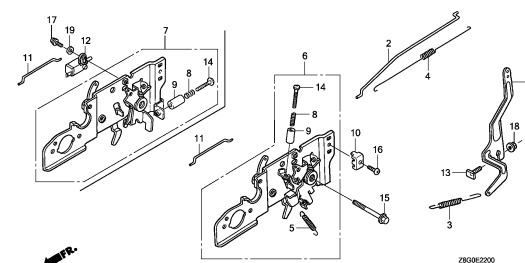
C12



E-22

CONTROL

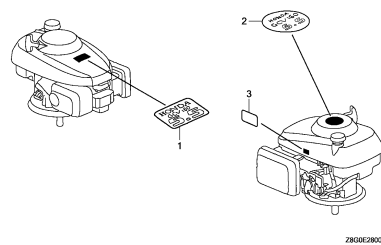
C13



E-28

LABEL

C14

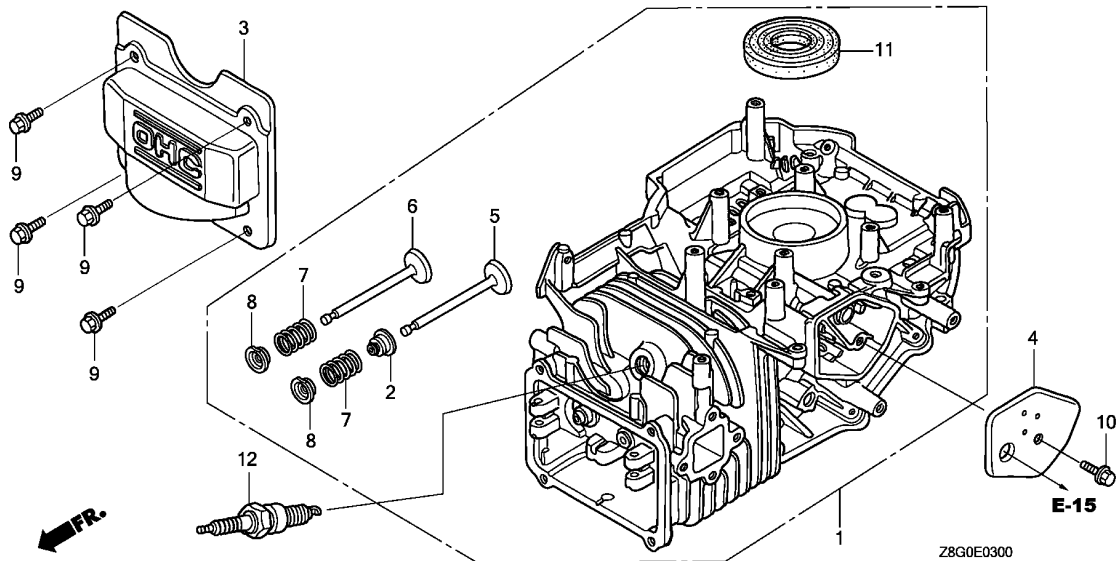


2

E-3

CYLINDER BARREL

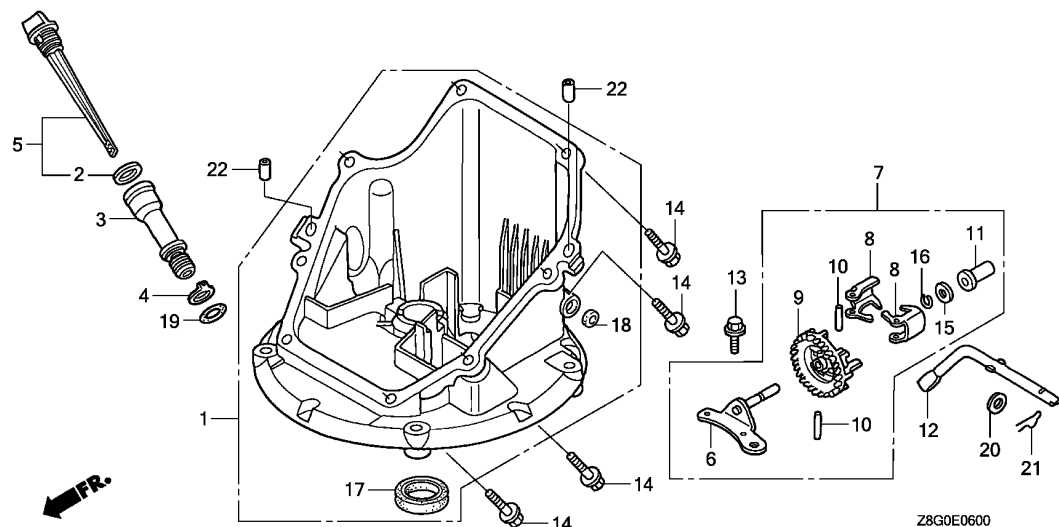
C 1



Service item F.R.T.

2

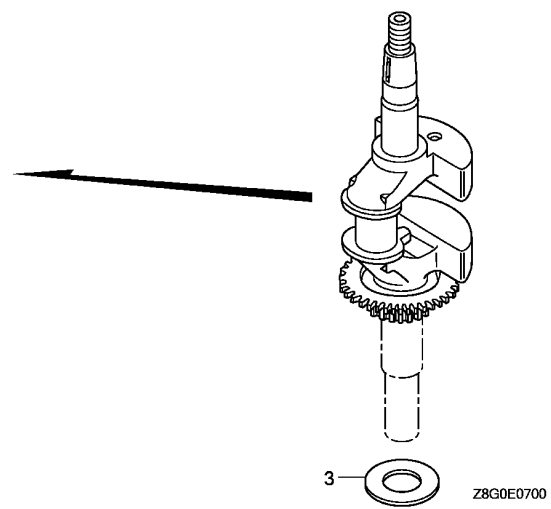
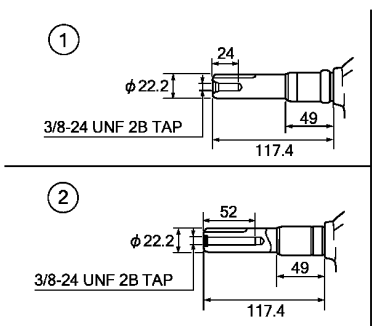
Ref. No.	Part No.	Description	Reqd. QTY		Serial No.	Parts catalogue code
			GCV	160 LE		
1	12000-ZL8-425	BARREL ASSY., CYLINDER	1			
2	12209-ZM0-003	SEAL, VALVE STEM	1			
3	12311-ZL8-000	COVER, HEAD	1			
4	12355-ZL8-000	COVER COMP., BREATHER	1			
5	14711-ZL8-000	VALVE, IN.	1			
6	14721-ZL8-000	VALVE, EX.	1			
7	14751-ZL8-000	SPRING, VALVE	2			
8	14771-ZE1-000	RETAINER, IN. VALVE SPRING ..	2			
9	90013-883-000	BOLT, FLANGE, 6X12(CT200) ...	4			
10	90014-952-000	BOLT, FLANGE, 6X14(CT200) ...	1			
11	91201-ZL8-003	OIL SEAL, 25.4X62X6	1			
12	98079-56846	PLUG, SPARK (BPR6ES)(NGK) ...	1			



Service item F.R.T.

Ref. No.	Part No.	Description	Reqd. QTY		Serial No.	Parts catalogue code
			GCV	160		
1	11300-ZM0-405	PAN ASSY., OIL	1		----- A2A9	
	11300-ZOM-405	1		----- N7A1	
2	15625-ZE6-000	PACKING, OIL FILLER CAP	1			
3	15631-ZM0-000	EXTENSION, OIL FILLER	1			
4	15639-ZM0-000	WASHER, EXTENSION LOCK	1			
5	15650-ZOM-800	GAUGE ASSY., OIL LEVEL	1			
6	16508-ZM0-010	SHAFT COMP., GOVERNOR HOLDER	1			
7	16510-ZM0-010	GOVERNOR ASSY.	1			
8	16511-ZL8-000	WEIGHT, GOVERNOR	2			
9	16512-ZM0-000	HOLDER, GOVERNOR WEIGHT	1			
10	16513-ZE1-000	PIN, GOVERNOR WEIGHT	2			
11	16531-ZE1-000	SLIDER, GOVERNOR	1			
12	16541-ZM0-000	SHAFT, GOVERNOR ARM	1			
13	90014-952-000	BOLT, FLANGE, 6X14(CT200) ...	1			
14	90121-952-000	BOLT, FLANGE, 6X25(CT200) ...	8			
15	90451-ZE1-000	WASHER, THRUST, 6MM	1			
16	90602-ZE1-000	CLIP, GOVERNOR HOLDER	1			
17	91202-ZL8-003	OIL SEAL, 28X41.25X6	1			
18	91231-891-003	OIL SEAL, 6X11X4	1		----- N7A1	
19	91303-ZOM-003	O-RING, 14.8X2.4	1			
20	94101-06800	WASHER, PLAIN, 6MM	1			
21	94251-08000	PIN, LOCK, 8MM	1			
22	94301-08200	DOWEL PIN, 8X20	2			

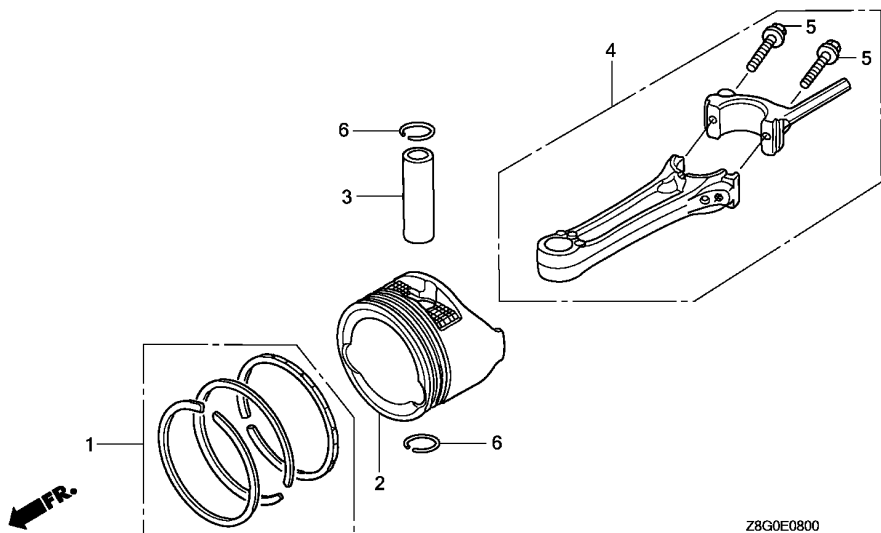
Service item F.R.T.



FR.

2

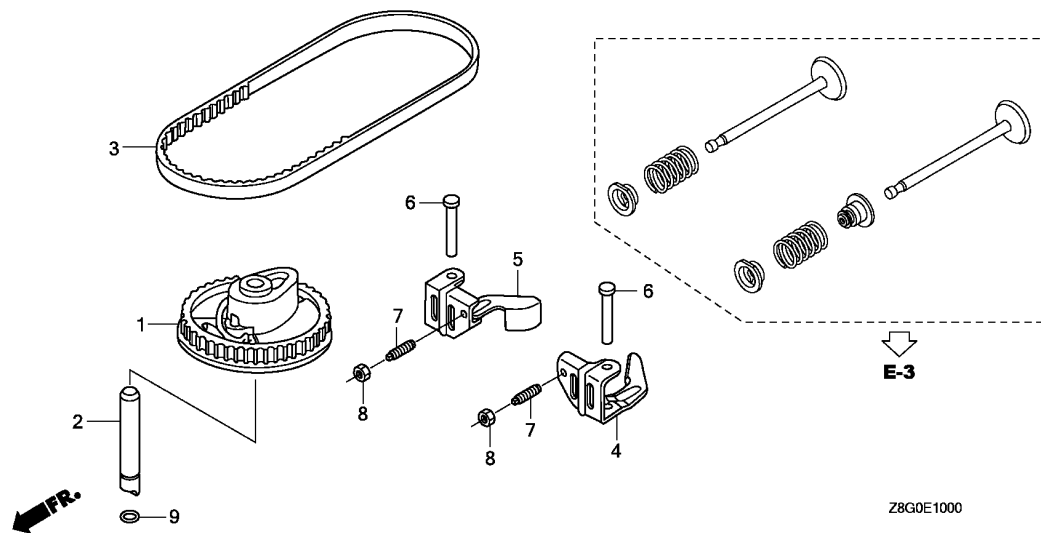
Ref. No.	Part No.	Description	Reqd. QTY		Serial No.	Parts catalogue code
			GCV	LE		
1	13310-ZM0-600	CRANKSHAFT COMP.	1		----- A2A9	
2	13310-ZOL-780	CRANKSHAFT COMP.	1		----- N7A1	
3	90402-ZL8-000	WASHER, THRUST	1			



Service item	F.R.T.

Ref. No.	Part No.	Description	Reqd. QTY		Serial No.	Parts catalogue code
			GCV	160		
1	13010-Z0L-014	RING SET, PISTON (STD.) (TEIKOKU)	1			
2	13101-Z2A-010	PISTON	1			
3	13111-ZE0-000	PIN, PISTON	1			
4	13200-ZL8-000	ROD ASSY., CONNECTING	1			
5	90001-ZE1-000	BOLT, CONNECTING ROD	2			
6	90551-ZE0-000	CLIP, PISTON PIN, 13MM	2			





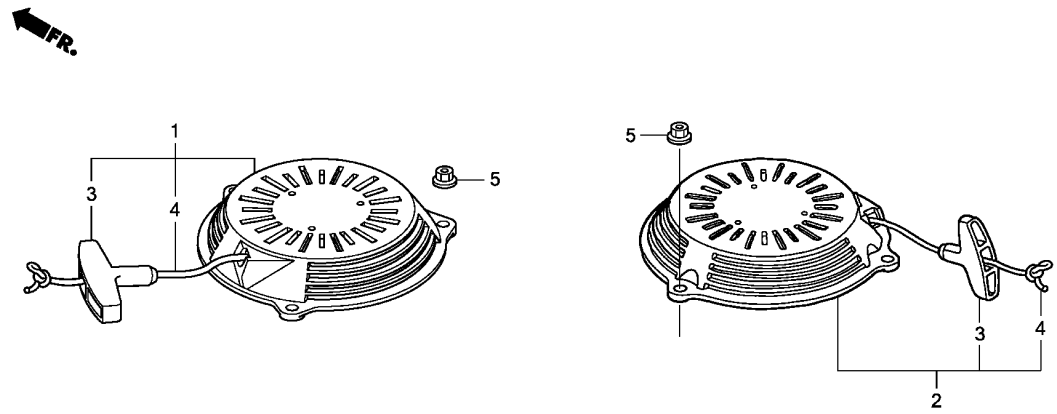
Service item	F.R.T.

Ref. No.	Part No.	Description	Reqd. QTY		Serial No.	Parts catalogue code
			GCV	LE		
1	14320-ZL8-010	PULLEY COMP., CAMSHAFT	1			
2	14324-ZL8-000	SHAFT, CAM PULLEY	1			
3	14400-ZL8-013	BELT, TIMING (84HU7 G-200)	1			
4	14431-Z0J-000	ARM, IN. VALVE ROCKER	1			
5	14441-Z0J-000	ARM, EX. VALVE ROCKER	1			
6	14461-ZL8-000	SHAFT, ROCKER ARM	2			
7	90012-333-000	SCREW, TAPPET ADJUSTING	2			
8	90206-001-000	NUT, TAPPET ADJUSTING	2			
9	91301-Z0M-003	O-RING, 6.8X1.9	1			



Service item

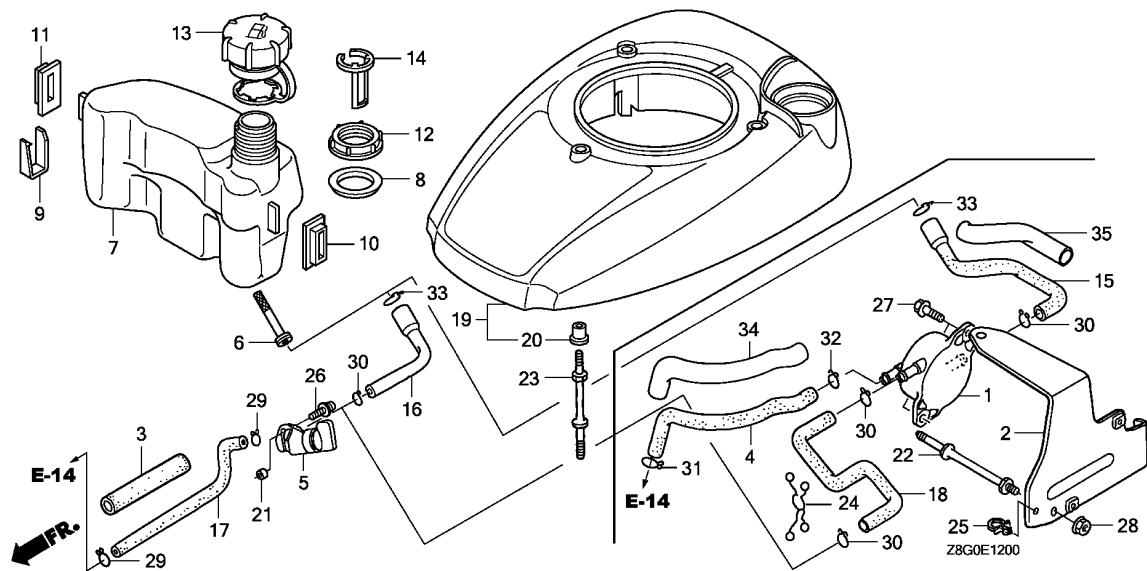
F.R.T.



Z8G0E1100

Ref. No.	Part No.	Description	Reqd. QTY		Serial No.	Parts catalogue code
			GCV 160 LE			
1	28400-ZL8-023ZA	STARTER ASSY., RECOIL *NH1*.....BLACK	1	-----	-----	N7A1
2	28400-ZM0-633ZA	STARTER ASSY., RECOIL (LONG ROPE) *NH1*.....BLACK	1	-----	-----	A2A9
3	28461-ZL8-003	GRIP, STARTER	1	-----	-----	N7A1
4	28462-ZL8-003	ROPE, RECOIL STARTER	1	-----	-----	N7A1
	28462-ZL8-631	ROPE, RECOIL STARTER (LONG TYPE)	1	-----	-----	A2A9
5	90201-ZM0-000	NUT, FLANGE, 6MM	3			

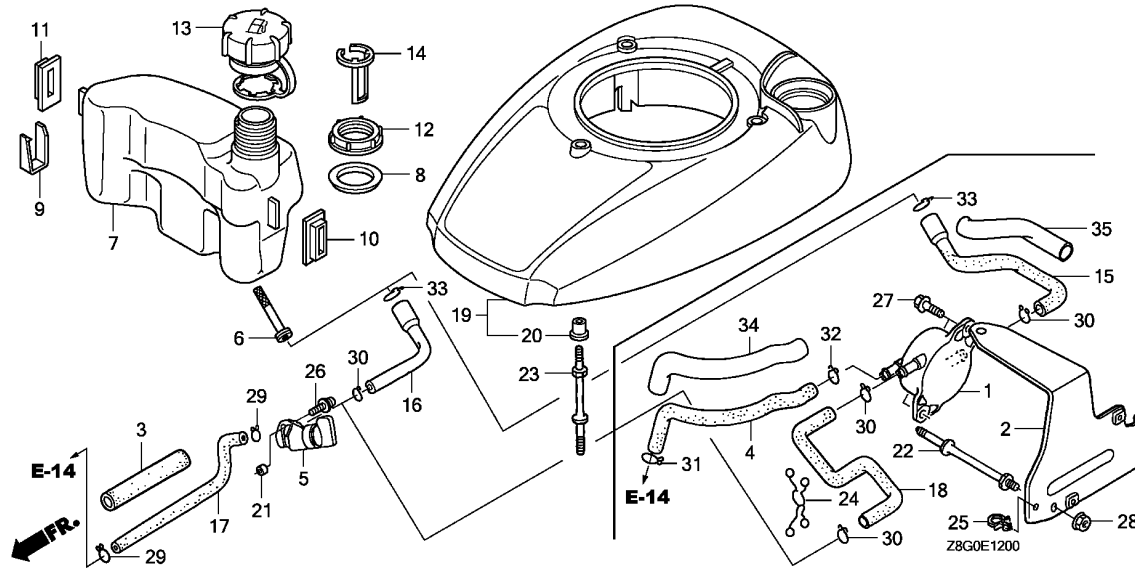




Service item

F.R.T.

Ref. No.	Part No.	Description	Reqd. QTY		Serial No.	Parts catalogue code
			GCV	160		
1	16700-ZOM-782	PUMP ASSY., FUEL	1		----- N7A1	
2	16711-ZOL-781	STAY, FUEL PUMP	1		----- N7A1	
3	16854-ZH8-000	RUBBER, SUPPORTER (107MM)	1		----- N7A1	
4	16882-ZOL-780	TUBE, DIAPHRAGM	1		----- N7A1	
5	16950-ZMO-003	COCK ASSY., FUEL	1			
6	16952-ZA8-800	STRAINER, FUEL	1			
7	17511-ZOL-000	TANK, FUEL	1			
8	17514-ZOL-000	SEAL, FUEL FILLER NECK	1			
9	17516-ZOL-000	CLIP, TANK MOUNTING	1			
10	17532-ZOL-000	RUBBER A, TANK MOUNTING	1			
11	17533-ZOL-000	RUBBER B, TANK MOUNTING	1			
12	17534-ZOL-000	NUT, TANK MOUNTING	1			
13	17620-ZOJ-800	CAP ASSY., FUEL TANK	1			
14	17636-ZOL-000	GAUGE, FUEL LEVEL	1			
15	17701-ZOL-780	TUBE, FUEL TANK	1		----- N7A1	
16	17701-ZOL-810	TUBE, FUEL TANK	1		----- A2A9	
17	17702-ZMO-800	TUBE, FUEL	1			
18	17703-ZOL-790	TUBE B, FUEL	1		----- N7A1	
19	19610-ZOL-850ZA	COVER COMP., FAN				
		NH1.....BLACK	1			
20	19619-ZL8-300	COLLAR, FAN COVER	3			
21	33609-GK4-620	COLLAR, FR. WINKER	1			
22	90041-ZOM-780	BOLT, STUD	1		----- N7A1	
23	90043-ZL8-000	BOLT, STUD	3			
24	90601-ZOM-003	CLIP, PURSE LOCK	1		----- N7A1	

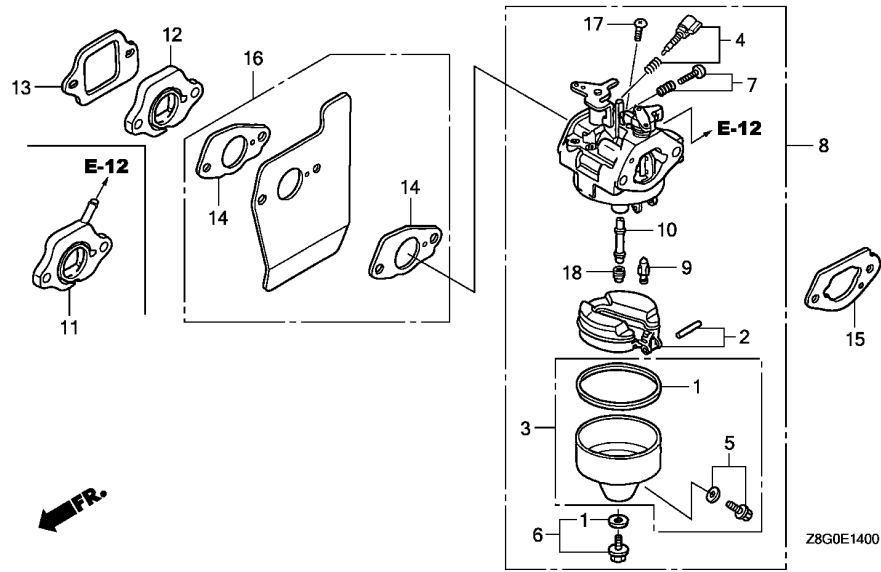


Ref. No.	Part No.	Description	Reqd. QTY		Serial No.	Parts catalogue code
			GCV 160 LE			
25	90659-680-013	CLIP, WIRE HARNESS	1		----- N7A1	
26	93891-05010-08	SCREW-WASHER, 5X10	1		----- N7A1	
27	93894-05014-00	SCREW-WASHER, 5X14	2		----- N7A1	
28	94050-06000	NUT, FLANGE, 6MM	1		----- N7A1	
29	95002-02080	CLIP, TUBE (B8)	2		----- A2A9	
30	95002-02100	CLIP, TUBE (B10)	1		----- N7A1	
			3			
31	95002-45000	CLIP, TUBE (C8)	1		----- N7A1	
32	95002-50000	CLIP, TUBE (C9)	1		----- N7A1	
33	95002-70000	CLIP, TUBE (C11)	1			
34	95003-25021-20	TUBE, VINYL, 9X11X210 (95003-25001-10M)	1		----- N7A1	
35	95003-43009-20	TUBE, VINYL, 13X15X90 (95003-43001-10M)	1		----- N7A1	

E-14

CARBURETOR

C 9



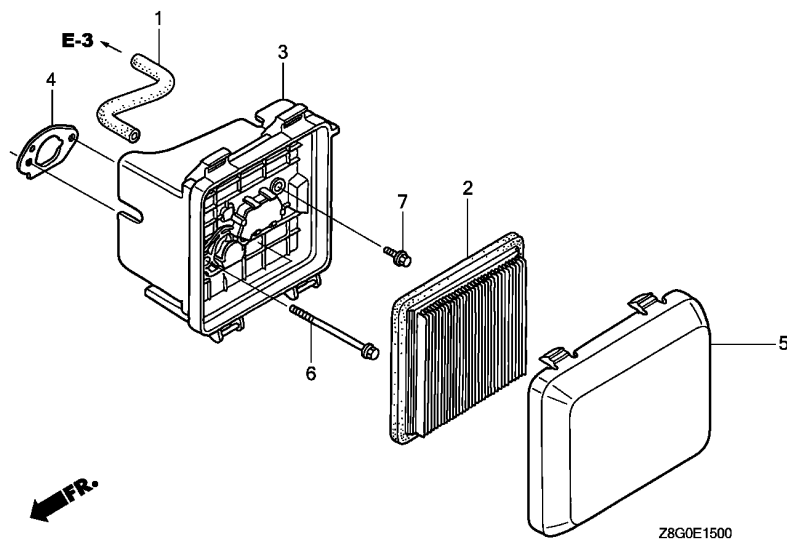
Service item

F.R.T.

Ref. No.	Part No.	Description	Reqd. QTY		Serial No.	Parts catalogue code
			GCV 160 LE			
1	16010-883-015	PACKING SET	1			
2	16013-ZL1-003	FLOAT SET	1			
3	16015-887-782	CHAMBER SET, FLOAT	1			
4	16016-ZG0-W00	SCREW SET	1			
5	16024-ZE1-811	SCREW SET, DRAIN	1			
6	16028-ZE0-005	SCREW SET	1			
7	16029-ZG0-901	SCREW SET (THROTTLE STOP) ...	1			
8	16100-Z0L-003	CARBURETOR ASSY. (BB62W A) ..	1	-----	A2A9	
	16100-Z1L-003	CARBURETOR ASSY. (BB62Y A) ..	1	-----	N7A1	
9	16155-ZM0-013	VALVE, FLOAT	1			
10	16166-ZM0-003	NOZZLE, MAIN	1			
11	16210-Z0M-780	INSULATOR COMP., CARBURETOR ..	1	-----	N7A1	
12	16211-ZL8-000	INSULATOR, CARBURETOR	1	-----	A2A9	
13	16212-ZL8-000	PACKING, INSULATOR	1			
14	16221-883-800	PACKING, CARBURETOR	2			
15	16228-ZL8-000	PACKING, CARBURETOR	1			
16	19650-ZM0-000	GUIDE COMP., AIR	1			
17	93500-05006-1H	SCREW, PAN, 5X6	1			
18	99101-124-0600	JET, MAIN, #60	(1)			
	99101-124-0620	JET, MAIN, #62	(1)			
	99101-124-0650	JET, MAIN, #65	1			

2

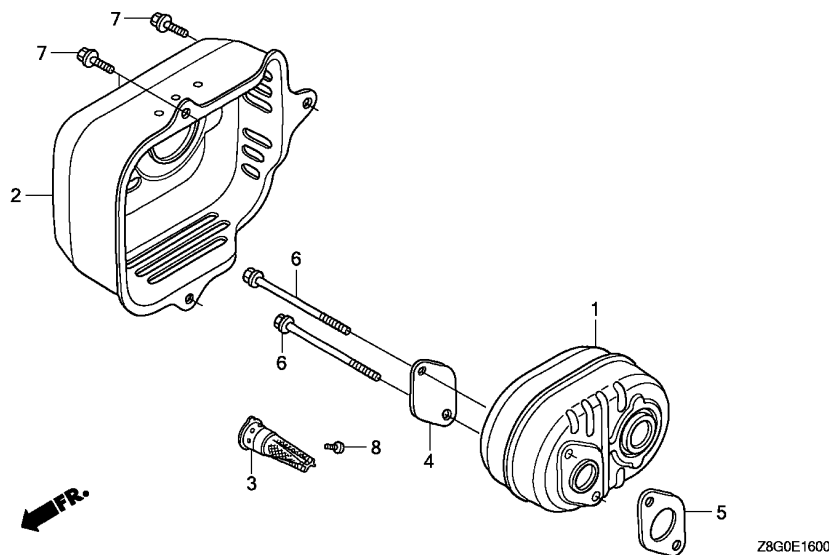
Service item F.R.T.



2

Ref. No.	Part No.	Description	Reqd. QTY		Serial No.	Parts catalogue code
			GCV	LE		
1	15721-ZM0-000	TUBE, BREATHER	1			
2	17211-ZL8-023	ELEMENT, AIR CLEANER	1			
3	17220-ZM0-000	CASE ASSY., AIR CLEANER	1			
4	17228-ZM0-000	PACKING, AIR CLEANER	1			
5	17231-Z0L-030	COVER, AIR CLEANER	1			
6	90003-ZM0-000	BOLT, FLANGE, 6X86(CT200) ...	2			
7	95701-06014-08	BOLT, FLANGE, 6X14	1			

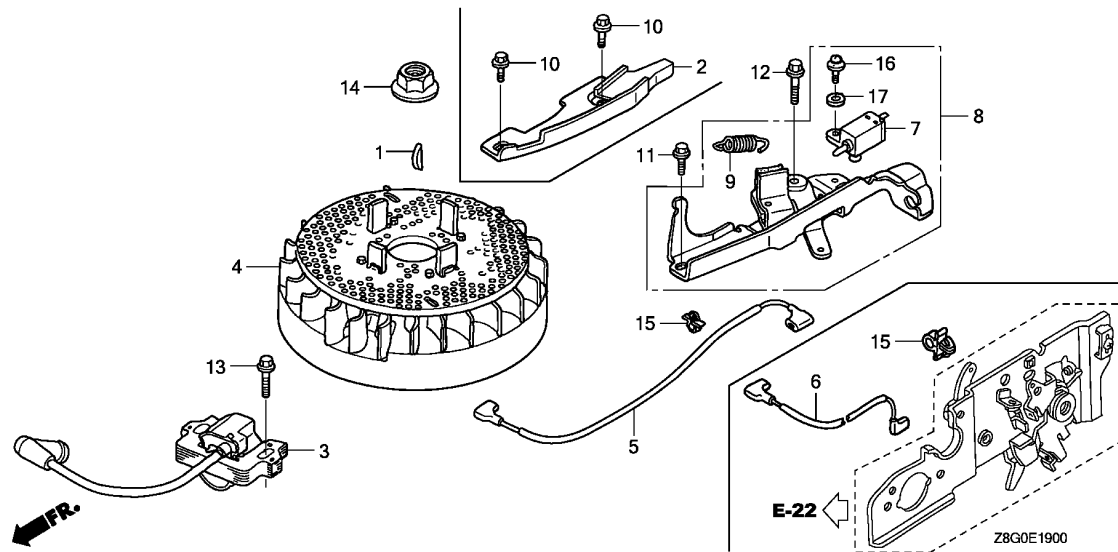
Service item F.R.T.



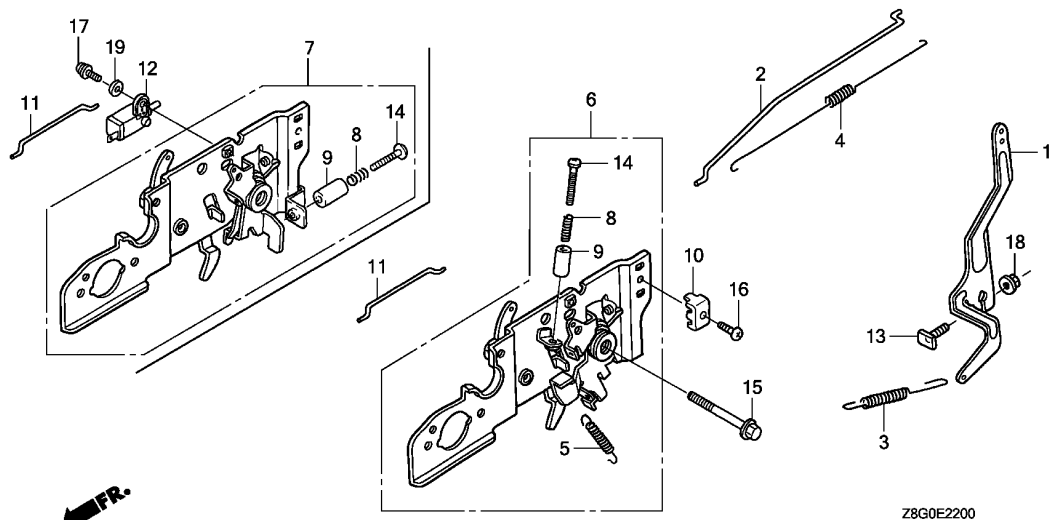
Ref. No.	Part No.	Description	Reqd. QTY		Serial No.	Parts catalogue code
			GCV 160 LE			
1	18310-ZM0-000	MUFFLER COMP.	1			
2	18320-ZOM-780	PROTECTOR COMP., MUFFLER ...	1	-----	N7A1	
	18321-ZL8-000	PROTECTOR, MUFFLER	1	-----	A2A9	
3	18350-ZL8-000	ARRESTER COMP., SPARK	(1)			
4	18356-ZL8-000	PLATE, ARRESTER NUMBER	(1)			
5	18381-ZL8-305	GASKET, MUFFLER	(1)			
6	90004-ZL8-000	BOLT, FLANGE, 6X79(CT200) ...	2			
7	90013-883-000	BOLT, FLANGE, 6X12(CT200) ...	3			
8	90055-ZE1-000	SCREW, TAPPING, 4X6	(1)			

Service item

F.R.T.



Ref. No.	Part No.	Description	Reqd. QTY		Serial No.	Parts catalogue code
			GCV	LE		
1	13331-357-000	KEY, SPECIAL WOODRUFF, 25X18	1			
2	19612-ZM0-J20	PLATE, SIDE	1		----- N7A1	
3	30500-ZL8-004	COIL ASSY., IGNITION (TEC) (USE FOR F/W OF TEC)	1			
4	31105-ZM0-000	FLYWHEEL ASSY. (TEC) (USE FOR IGN. COIL OF TEC)	1			
5	32195-ZM0-000	CORD, STOP SWITCH	1		----- A2A9	
6	32195-ZM0-800	CORD, STOP SWITCH	1		----- N7A1	
7	35120-ZM0-003	SWITCH ASSY., ENGINE STOP (N.C)	1		----- A2A9	
8	75100-ZM0-000	BRAKE ASSY.	1		----- A2A9	
9	75113-ZM0-000	SPRING, BRAKE LEVER	1		----- A2A9	
10	90013-883-000	BOLT, FLANGE, 6X12(CT200) ...	2		----- N7A1	
11	90014-952-000	BOLT, FLANGE, 6X14(CT200) ...	1		----- A2A9	
12	90018-ZE1-000	BOLT, FLANGE, 6X23(CT200) ...	1		----- A2A9	
13	90022-888-010	BOLT, FLANGE, 6X20(CT200) ...	1			
14	90201-878-003	NUT, SPECIAL, 14MM	1			
15	90681-959-003	CLIP A, CABLE (NIFCO)	1			
16	93892-04012-00	SCREW-WASHER, 4X12	1		----- A2A9	
17	94103-04000	WASHER, PLAIN, 4MM	1		----- A2A9	



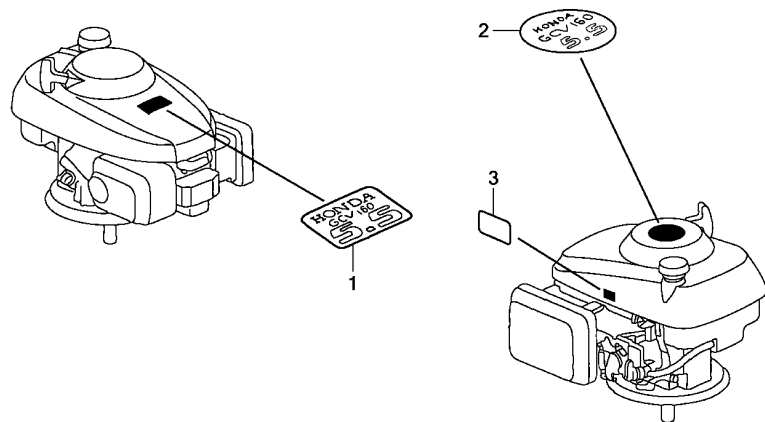
Z8G0E2200

Service item F.R.T.

2

Ref. No.	Part No.	Description	Reqd. QTY		Serial No.	Parts catalogue code
			GCV	LE		
1	16551-ZM0-010	ARM, GOVERNOR	1			
2	16555-ZM0-000	ROD, GOVERNOR	1			
3	16561-ZM0-V30	SPRING, GOVERNOR	1		N7A1	
	16561-Z1L-870	1		A2A9	
4	16562-ZM0-000	SPRING, THROTTLE RETURN	1			
5	16576-ZE7-300	SPRING, LEVER	1		A2A9	
6	16580-ZM0-871	BASE COMP., CONTROL	1		A2A9	
7	16580-ZOM-780	BASE COMP., CONTROL	1		N7A1	
8	16584-883-300	SPRING, CONTROL ADJUSTING	1			
9	16599-ZG1-M10	COLLAR, STOPPER	1			
10	16617-VG3-000	HOLDER, CABLE	1			
11	16674-ZM0-000	ROD, CHOKE	1			
12	35120-ZL8-003	SWITCH ASSY., ENGINE STOP	1		N7A1	
		(N.O)				
13	90015-ZE5-010	BOLT, GOVERNOR ARM	1			
14	90016-ZE7-W00	SCREW, RECESSED, 5X28	1			
15	90016-ZM0-000	BOLT, FLANGE, 6X45(CT200)	1			
16	93500-05016-0A	SCREW, PAN, 5X16	1			
17	93892-04012-00	SCREW-WASHER, 4X12	1		N7A1	
18	94050-06000	NUT, FLANGE, 6MM	1			
19	94103-04000	WASHER, PLAIN, 4MM	1		N7A1	

Service item F.R.T.



Z8G0E2800

Ref. No.	Part No.	Description	Reqd. QTY		Serial No.	Parts catalogue code
			GCV 160 LE			
1	87101-ZM0-010	MARK, EMBLEM (GCV160 5.5) ...	1	-----	-----	A2A9
2	87101-Z0L-801	MARK, EMBLEM (GCV160)	1	-----	-----	N7A1
3	87114-ZH7-821	LABEL, WARNING (NOT CERTIFIED FOR SALE)	1	-----	-----	A2A9
	87114-Z3E-000	1	-----	-----	N7A1



PART NO. INDEX

D 1

Part Number	Address	Page	Ref.	Part Number	Address	Page	Ref.	Part Number	Address	Page	Ref.	Part Number	Address	Page	Ref.
11000				16221-883-800	C9	18	14	19612-ZM0-J20	C12	21	2	90016-ZE7-W00	C13	22	14
				16228-ZL8-000	C9	18	15	19619-ZL8-300	C7	16	20	90016-ZM0-000	C13	22	15
11300-ZOM-405	C2	11	1	16508-ZM0-010	C2	11	6	19650-ZM0-000	C9	18	16	90018-ZE1-000	C12	21	12
11300-ZM0-405	C2	11	1	16510-ZM0-010	C2	11	7					90022-888-010	C12	21	13
				16511-ZL8-000	C2	11	8	28000				90041-ZOM-780	C7	16	22
				16512-ZM0-000	C2	11	9					90043-ZL8-000	C7	16	23
12000				16513-ZE1-000	C2	11	10	28400-ZL8-023ZA	C6	15	1	90055-ZE1-000	C11	20	8
12000-ZL8-425	C1	10	1	16531-ZE1-000	C2	11	11	28400-ZM0-633ZA	C6	15	2	90121-952-000	C2	11	14
12209-ZM0-003	C1	10	2	16541-ZM0-000	C2	11	12	28461-ZL8-003	C6	15	3	90201-878-003	C12	21	14
12311-ZL8-000	C1	10	3	16551-ZM0-010	C13	22	1	28462-ZL8-003	C6	15	4	90201-ZM0-000	C6	15	5
12355-ZL8-000	C1	10	4	16555-ZM0-000	C13	22	2	28462-ZL8-631	C6	15	4	90206-001-000	C5	14	8
				16561-Z1L-870	C13	22	3					90402-ZL8-000	C3	12	3
13000				16561-ZM0-V30	C13	22	3	30000				90451-ZE1-000	C2	11	15
				16562-ZM0-000	C13	22	4					90551-ZE0-000	C4	13	6
13010-ZOL-014	C4	13	1	16576-ZE7-300	C13	22	5	30500-ZL8-004	C12	21	3	90601-ZOM-003	C7	16	24
13101-Z2A-010	C4	13	2	16580-ZOM-780	C13	22	7					90602-ZE1-000	C2	11	16
13111-ZE0-000	C4	13	3	16580-ZM0-871	C13	22	6	31000				90659-680-013	C8	17	25
13200-ZL8-000	C4	13	4	16584-883-300	C13	22	8					90681-959-003	C12	21	15
13310-ZOL-780	C3	12	2	16599-ZG1-M10	C13	22	9	31105-ZM0-000	C12	21	4				
13310-ZM0-600	C3	12	1	16617-VG3-000	C13	22	10					91000			
13331-357-000	C12	21	1	16674-ZM0-000	C13	22	11								
				16700-ZOM-782	C7	16	1	32000				91201-ZL8-003	C1	10	11
14000				16711-ZOL-781	C7	16	2	32195-ZM0-000	C12	21	5	91202-ZL8-003	C2	11	17
				16854-ZH8-000	C7	16	3	32195-ZM0-800	C12	21	6	91231-891-003	C2	11	18
14320-ZL8-010	C5	14	1	16882-ZOL-780	C7	16	4					91301-ZOM-003	C5	14	9
14324-ZL8-000	C5	14	2	16950-ZM0-003	C7	16	5	33000				91303-ZOM-003	C2	11	19
14400-ZL8-013	C5	14	3	16952-ZA8-800	C7	16	6								
14431-Z0J-000	C5	14	4					33609-GK4-620	C7	16	21				
14441-Z0J-000	C5	14	5	17000								93000			
14461-ZL8-000	C5	14	6					35000				93500-05006-1H	C9	18	17
14711-ZL8-000	C1	10	5	17211-ZL8-023	C10	19	2					93500-05016-0A	C13	22	16
14721-ZL8-000	C1	10	6	17220-ZM0-000	C10	19	3	35120-ZL8-003	C13	22	12	93891-05010-08	C8	17	26
14751-ZL8-000	C1	10	7	17228-ZM0-000	C10	19	4	35120-ZM0-003	C12	21	7	93892-04012-00	C12	21	16
14771-ZE1-000	C1	10	8	17231-ZOL-030	C10	19	5						C13	22	17
				17511-ZOL-000	C7	16	7	75000				93894-05014-00	C8	17	27
15000				17514-ZOL-000	C7	16	8								
				17516-ZOL-000	C7	16	9	75100-ZM0-000	C12	21	8	94000			
15625-ZE6-000	C2	11	2	17532-ZOL-000	C7	16	10	75113-ZM0-000	C12	21	9				
15631-ZM0-000	C2	11	3	17533-ZOL-000	C7	16	11					94050-06000	C8	17	28
15639-ZM0-000	C2	11	4	17534-ZOL-000	C7	16	12	87000					C13	22	18
15650-ZOM-800	C2	11	5	17620-Z0J-800	C7	16	13					94101-06800	C2	11	20
15721-ZM0-000	C10	19	1	17636-ZOL-000	C7	16	14	87101-ZOL-801	C14	23	2	94103-04000	C12	21	17
				17701-ZOL-780	C7	16	15	87101-ZM0-010	C14	23	1		C13	22	19
16000				17701-ZOL-810	C7	16	16	87114-Z3E-000	C14	23	3	94251-08000	C2	11	21
				17702-ZM0-800	C7	16	17	87114-ZH7-821	C14	23	3	94301-08200	C2	11	22
16010-883-015	C9	18	1	17703-ZOL-790	C7	16	18								
16013-ZL1-003	C9	18	2					90000				95000			
16015-887-782	C9	18	3	18000											
16016-ZG0-W00	C9	18	4					90001-ZE1-000	C4	13	5	95002-02080	C8	17	29
16024-ZE1-811	C9	18	5	18310-ZM0-000	C11	20	1	90003-ZM0-000	C10	19	6	95002-02100	C8	17	30
16028-ZE0-005	C9	18	6	18320-ZOM-780	C11	20	2	90004-ZL8-000	C11	20	6	95002-45000	C8	17	31
16029-ZG0-901	C9	18	7	18321-ZL8-000	C11	20	2	90012-333-000	C5	14	7	95002-50000	C8	17	32
16100-ZOL-003	C9	18	8	18350-ZL8-000	C11	20	3	90013-883-000	C1	10	9	95002-70000	C8	17	33
16100-Z1L-003	C9	18	8	18356-ZL8-000	C11	20	4					95003-25021-20	C8	17	34
16155-ZM0-013	C9	18	9	18381-ZL8-305	C11	20	5					95003-43009-20	C8	17	35
16166-ZM0-003	C9	18	10					90014-952-000	C1	10	10	95701-06014-08	C10	19	7
16210-ZOM-780	C9	18	11	19000											
16211-ZL8-000	C9	18	12												
16212-ZL8-000	C9	18	13	19610-ZOL-850ZA	C7	16	19	90015-ZE5-010	C13	22	13				

PART NAME INDEX

E 1

Part name	Address	Page	Ref.	Part name	Address	Page	Ref.	Part name	Address	Page	Ref.
[A]				COVER, HEAD	C1	10	3	NUT, FLANGE, 6MM.....	C8	17	28
ARM, EX. VALVE ROCKER	C5	14	5	CRANKSHAFT COMP.	C3	12	1		C13	22	18
ARM, GOVERNOR	C13	22	1				2	NUT, SPECIAL, 14MM.....	C12	21	14
ARM, IN. VALVE ROCKER	C5	14	4	[D]				NUT, TANK MOUNTING.....	C7	16	12
ARRESTER COMP., SPARK	C11	20	3	DOWEL PIN, 8X20	C2	11	22	NUT, TAPPET ADJUSTING.....	C5	14	8
[B]				[E]				[O]			
BARREL ASSY., CYLINDER	C1	10	1	ELEMENT, AIR CLEANER	C10	19	2	OIL SEAL, 25.4X62X6.....	C1	10	11
BASE COMP., CONTROL	C13	22	6	EXTENSION, OIL FILLER.....	C2	11	3	OIL SEAL, 28X41.25X6.....	C2	11	17
				[F]				OIL SEAL, 6X11X4.....	C2	11	18
BELT, TIMING	C5	14	3	FLOAT SET	C9	18	2	O-RING, 14.8X2.4.....	C2	11	19
BOLT, CONNECTING ROD	C4	13	5	FLYWHEEL ASSY.	C12	21	4	O-RING, 6.8X1.9.....	C5	14	9
BOLT, FLANGE, 6X12	C1	10	9	[G]				[P]			
	C11	20	7	GASKET, MUFFLER	C11	20	5	PACKING SET.....	C9	18	1
	C12	21	10	GAUGE ASSY., OIL LEVEL	C2	11	5	PACKING, AIR CLEANER.....	C10	19	4
BOLT, FLANGE, 6X14	C1	10	10	GAUGE, FUEL LEVEL	C7	16	14	PACKING, CARBURETOR.....	C9	18	14
	C2	11	13	GOVERNOR ASSY.	C2	11	7				
	C10	19	7	GRIP, STARTER.....	C6	15	3	PACKING, INSULATOR.....	C9	18	13
	C12	21	11	GUIDE COMP., AIR.....	C9	18	16	PACKING, OIL FILLER CAP.....	C2	11	2
BOLT, FLANGE, 6X20	C12	21	13	[H]				PAN ASSY., OIL.....	C2	11	1
BOLT, FLANGE, 6X23	C12	21	12	HOLDER, CABLE.....	C13	22	10	PIN, GOVERNOR WEIGHT.....	C2	11	10
BOLT, FLANGE, 6X25	C2	11	14	HOLDER, GOVERNOR WEIGHT	C2	11	9	PIN, LOCK, 8MM.....	C2	11	21
BOLT, FLANGE, 6X45	C13	22	15					PIN, PISTON.....	C4	13	3
BOLT, FLANGE, 6X79	C11	20	6	[I]				PISTON.....	C4	13	2
BOLT, FLANGE, 6X86	C10	19	6	INSULATOR COMP., CARBURETOR ...	C9	18	11	PLATE, ARRESTER NUMBER.....	C11	20	4
BOLT, GOVERNOR ARM	C13	22	13	INSULATOR, CARBURETOR	C9	18	12	PLATE, SIDE.....	C12	21	2
BOLT, STUD	C7	16	22	[J]				PLUG, SPARK.....	C1	10	12
			23	JET, MAIN,.....	C9	18	18	PROTECTOR COMP., MUFFLER.....	C11	20	2
BRAKE ASSY.	C12	21	8	[K]				PROTECTOR, MUFFLER.....	C11	20	2
[C]				KEY, SPECIAL WOODRUFF, 25X18 ..	C12	21	1	PULLEY COMP., CAMSHAFT.....	C5	14	1
CAP ASSY., FUEL TANK	C7	16	13	[L]				PUMP ASSY., FUEL.....	C7	16	1
CARBURETOR ASSY.	C9	18	8	LABEL, WARNING	C14	23	3	[R]			
CASE ASSY., AIR CLEANER	C10	19	3	[M]				RETAINER, IN. VALVE SPRING.....	C1	10	8
CHAMBER SET, FLOAT	C9	18	3	MARK, EMBLEM	C14	23	1	RING SET, PISTON.....	C4	13	1
CLIP A, CABLE	C12	21	15	MUFFLER COMP.	C11	20	1	ROD ASSY., CONNECTING.....	C4	13	4
CLIP, GOVERNOR HOLDER	C2	11	16	[N]				ROD, CHOKE.....	C13	22	11
CLIP, PISTON PIN, 13MM	C4	13	6	NOZZLE, MAIN	C9	18	10	ROD, GOVERNOR.....	C13	22	2
CLIP, PURSE LOCK	C7	16	24	NUT, FLANGE, 6MM	C6	15	5	ROPE, RECOIL STARTER.....	C6	15	4
CLIP, TANK MOUNTING	C7	16	9					RUBBER A, TANK MOUNTING.....	C7	16	10
CLIP, TUBE	C8	17	29	[O]				RUBBER B, TANK MOUNTING.....	C7	16	11
			30	[S]				RUBBER, SUPPORTER.....	C7	16	3
			31	SCREW-WASHER, 4X12.....	C12	21	16				
			32		C13	22	17	SCREW-WASHER, 5X10.....	C8	17	26
			33					SCREW-WASHER, 5X14.....	C8	17	27
CLIP, WIRE HARNESS	C8	17	25	[M]				SCREW SET.....	C9	18	4
COCK ASSY., FUEL	C7	16	5	MARK, EMBLEM	C14	23	1				
COIL ASSY., IGNITION	C12	21	3	MUFFLER COMP.	C11	20	1	SCREW SET, DRAIN.....	C9	18	5
COLLAR, FAN COVER	C7	16	20	[N]				SCREW, PAN, 5X16.....	C13	22	16
COLLAR, FR. WINKER	C7	16	21	NOZZLE, MAIN	C9	18	10	SCREW, PAN, 5X6.....	C9	18	17
COLLAR, STOPPER	C13	22	9	NUT, FLANGE, 6MM	C6	15	5				
CORD, STOP SWITCH	C12	21	5								
			6								
COVER COMP., BREATHER	C1	10	4								
COVER COMP., FAN	C7	16	19								
COVER, AIR CLEANER	C10	19	5								

PART NAME INDEX

Part name	Address	Page	Ref.	Part name	Address	Page	Ref.	Part name	Address	Page	Ref.
SCREW, RECESSED, 5X28	C13	22	14								
SCREW, TAPPET ADJUSTING	C5	14	7								
SCREW, TAPPING, 4X6	C11	20	8								
SEAL, FUEL FILLER NECK	C7	16	8								
SEAL, VALVE STEM	C1	10	2								
SHAFT COMP., GOVERNOR HOLDER ..	C2	11	6								
SHAFT, CAM PULLEY	C5	14	2								
SHAFT, GOVERNOR ARM	C2	11	12								
SHAFT, ROCKER ARM	C5	14	6								
SLIDER, GOVERNOR	C2	11	11								
SPRING, BRAKE LEVER	C12	21	9								
SPRING, CONTROL ADJUSTING	C13	22	8								
SPRING, GOVERNOR	C13	22	3								
SPRING, LEVER	C13	22	5								
SPRING, THROTTLE RETURN	C13	22	4								
SPRING, VALVE	C1	10	7								
STARTER ASSY., RECOIL	C6	15	1								
			2								
STAY, FUEL PUMP	C7	16	2								
STRAINER, FUEL	C7	16	6								
SWITCH ASSY., ENGINE STOP	C12	21	7								
	C13	22	12								
[T]											
TANK, FUEL	C7	16	7								
TUBE B, FUEL	C7	16	18								
TUBE, BREATHER	C10	19	1								
TUBE, DIAPHRAGM	C7	16	4								
TUBE, FUEL	C7	16	17								
TUBE, FUEL TANK	C7	16	15								
			16								
TUBE, VINYL, 13X15X90	C8	17	35								
TUBE, VINYL, 9X11X210	C8	17	34								
[V]											
VALVE, EX.	C1	10	6								
VALVE, FLOAT	C9	18	9								
VALVE, IN.	C1	10	5								
[W]											
WASHER, EXTENSION LOCK	C2	11	4								
WASHER, PLAIN, 4MM	C12	21	17								
	C13	22	19								
WASHER, PLAIN, 6MM	C2	11	20								
WASHER, THRUST	C3	12	3								
WASHER, THRUST, 6MM	C2	11	15								
WEIGHT, GOVERNOR	C2	11	8								

1

FOREWORD INDEX

2

ENGINE GROUP

3

PART NUMBER INDEX

4

PART NAME INDEX

HONDA
The Power of Dreams

April 16, 2007



PARTS CATALOG NEWS

Honda Motor Co., Ltd. Service Division

PARTS CATALOG - CORRECTED

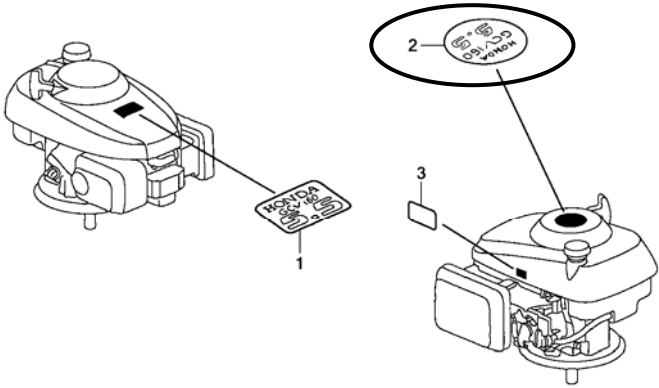
Printed in Japan

CODE NO.	14Z8G701
PARTS CATALOG NEWS	GCV160LE
NEWS NO.	001

Block No.	Ref. No.	Note	Part No.	Description	Reqd. QTY	Serial No.	Parts catalog code
					GCV 160 LE		

E-28 LABEL

ILLUSTRATION CORRECTED



Z8G0E2800A

NOTE A:PART NO. CHANGE D:NEWLY PROVIDED E:PART NO.DELETION K:REQUIRED NO. CORRECTION L:APPLICATION SERIAL NO. CORRECTION
T:APPLICATION CORRECTION Z:REMARKS CHANGE

March 10, 2008



PARTS CATALOG NEWS

Honda Motor Co., Ltd. Service Division

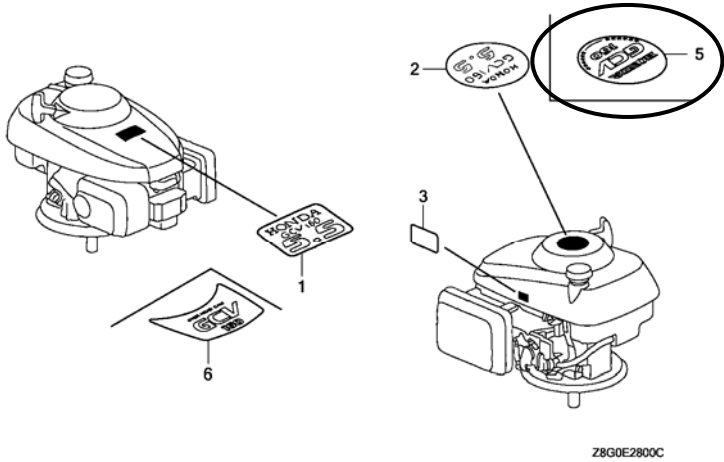
PARTS CATALOG - CORRECTED

Printed in Japan

CODE NO.	14Z8G701
PARTS CATALOG NEWS	GCV160LE
NEWS NO.	002

Block No.	Ref. No.	Note	Part No.	Description	Reqd. QTY	Serial No.	Parts catalog code
					GCV160LE		
E-22	7	L	16580-ZOM-780	BASE COMP., CONTROL	1	----- 2112488	N7A1
		D	16580-ZOM-781	1	2112489 -----	N7A1

E-28 LABEL



NOTE A:PART NO. CHANGE D:NEWLY PROVIDED E:PART NO.DELETION K:REQUIRED NO. CORRECTION L:APPLICATION SERIAL NO. CORRECTION T:APPLICATION CORRECTION Z:REMARKS CHANGE

PARTS CATALOG NEWS

BOOKNo. : 14Z8G701

Block No.	Ref. No.	Note	Part No.	Description	Reqd. QTY	Serial No.		Parts catalog code
					GCV 160 LE			
E-28	2	L	87101-ZOL-801	MARK, EMBLEM (GCV160 5.5)	1	-----	2189259	N7A1
	5	D	87101-ZOL-802	MARK, EMBLEM (GCV160)	1	2189260	-----	N7A1

NOTE A:PART NO. CHANGE D:NEWLY PROVIDED E:PART NO.DELETION K:REQUIRED NO. CORRECTION L:APPLICATION SERIAL NO. CORRECTION
T:APPLICATION CORRECTION Z:REMARKS CHANGE



PARTS CATALOG NEWS

Honda Motor Co., Ltd. Service Division

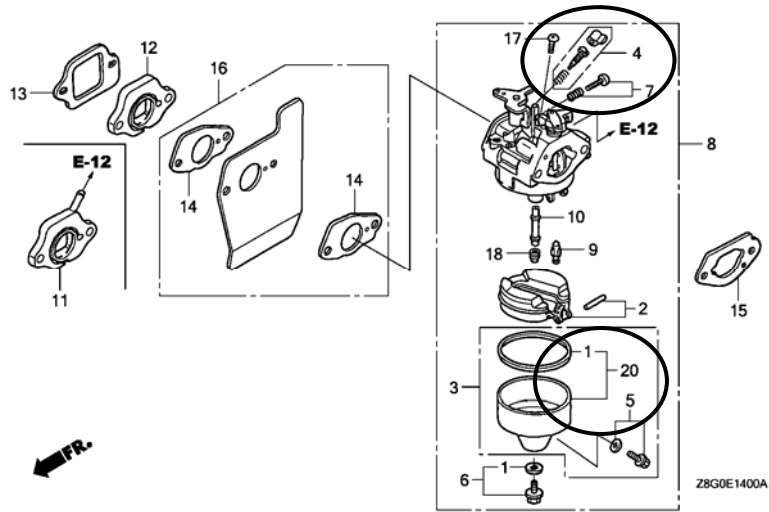
PARTS CATALOG - CORRECTED

Printed in Japan

CODE NO.	14Z8G701
PARTS CATALOG NEWS	GCV160LE
NEWS NO.	003

Block No.	Ref. No.	Note	Part No.	Description	Reqd. QTY	Serial No.	Parts catalog code
E-14					GCV 160 LE		

E-14 CARBURETOR



E-14	3	L	16015-887-782	CHAMBER SET, FLOAT (CARBURETOR NO.)	1	----- BB62W A A2A9, A4A9	
------	---	---	---------------	--	---	--------------------------	--

NOTE A:PART NO. CHANGE D:NEWLY PROVIDED E:PART NO. DELETION K:REQUIRED NO. CORRECTION L:APPLICATION SERIAL NO. CORRECTION
T:APPLICATION CORRECTION Z:REMARKS CHANGE

PARTS CATALOG NEWS

BOOKNo. : 14Z8G701

Block No.	Ref. No.	Note	Part No.	Description	Reqd. QTY	Serial No.		Parts catalog code
					GCV 160 LE			
				(CARBURETOR NO.)	1	-----	BB62Y A	N7A1
	5	L	16024-ZE1-811	SCREW SET, DRAIN (CARBURETOR NO.)	1	-----	BB62W A	A2A9, A4A9
				(CARBURETOR NO.)	1	-----	BB62Y A	N7A1
	20	D	16015-ZOL-881	CHAMBER SET, FLOAT (CARBURETOR NO.)	1		BB62W B	----- A2A9, A4A9
				(CARBURETOR NO.)	1		BB62Y B	----- N7A1

NOTE A:PART NO. CHANGE D:NEWLY PROVIDED E:PART NO.DELETION K:REQUIRED NO. CORRECTION L:APPLICATION SERIAL NO. CORRECTION
T:APPLICATION CORRECTION Z:REMARKS CHANGE

July 27, 2008



PARTS CATALOG NEWS

Honda Motor Co., Ltd. Service Division

PARTS CATALOG - CORRECTED

Printed in Japan

CODE NO.	14Z8G701
PARTS CATALOG NEWS	GCV160LE
NEWS NO.	004

Block No.	Ref. No.	Note	Part No.	Description	Reqd. QTY GCV 160 LE	Serial No.	Parts catalog code
-----------	----------	------	----------	-------------	-------------------------------	------------	--------------------

ENGINE SERIAL NO. CORRECTED

Model	Type	Parts catalogue type	Applicable engine serial No.
GCV160LE	A2A9	A2A9	GJAAE-1000001~
	A4A9	A4A9	
	A7H1	A7H1	
	N7A1	N7A1	

Applicable engine serial No.
GJAAE-2075803~

NOTE A:PART NO. CHANGE D:NEWLY PROVIDED E:PART NO. DELETION K:REQUIRED NO. CORRECTION L:APPLICATION SERIAL NO. CORRECTION
T:APPLICATION CORRECTION Z:REMARKS CHANGE

September 19, 2008



PARTS CATALOG NEWS

Honda Motor Co., Ltd. Service Division

PARTS CATALOG - CORRECTED

Printed in Japan

CODE NO.	14Z8G701
PARTS CATALOG NEWS	GCV160LE
NEWS NO.	005

Block No.	Ref. No.	Note	Part No.	Description	Reqd. QTY GCV 160 LE	Serial No.	Parts catalog code
E-12	7	E	17511-ZOL-000	*PARTS NO. DELETION			
		D	17511-ZOL-010	TANK, FUEL	1	-----	A2A9, A4A9, N7A1

NOTE A:PART NO. CHANGE D:NEWLY PROVIDED E:PART NO. DELETION K:REQUIRED NO. CORRECTION L:APPLICATION SERIAL NO. CORRECTION
T:APPLICATION CORRECTION Z:REMARKS CHANGE

November 03, 2008



PARTS CATALOG NEWS

Honda Motor Co., Ltd. Service Division

PARTS CATALOG - CORRECTED

Printed in Japan

CODE NO.	14Z8G701
PARTS CATALOG NEWS	GCV160LE
NEWS NO.	006

Block No.	Ref. No.	Note	Part No.	Description	Reqd. QTY	Serial No.	Parts catalog code
E-22	6	L	16580-ZMO-871	BASE COMP., CONTROL	1	----- 2352103	A2A9
		T	16580-ZMO-872	1	2352104 -----	A2A9

NOTE A:PART NO. CHANGE D:NEWLY PROVIDED E:PART NO. DELETION K:REQUIRED NO. CORRECTION L:APPLICATION SERIAL NO. CORRECTION
T:APPLICATION CORRECTION Z:REMARKS CHANGE

November 30, 2008



PARTS CATALOG NEWS

Honda Motor Co., Ltd. Service Division

PARTS CATALOG - CORRECTED

Printed in Japan

CODE NO.	14Z8G701
PARTS CATALOG NEWS	GCV160LE
NEWS NO.	007

Block No.	Ref. No.	Note	Part No.	Description	Reqd. QTY GCV 160 LE	Serial No.	Parts catalog code
E-3	12	L	98079-56846	PLUG, SPARK (BPR6ES)(NGK)	1	----- 2218977	A2A9,A4A9
		D	98079-55846	PLUG, SPARK (BPR5ES)(NGK)	1	2218978 -----	A2A9,A4A9
E-12	19	E	19610-ZOL-850ZA	*PARTS NO. DELETION			
		T	19610-ZOL-851ZA	COVER COMP., FAN *NH1*.....BLACK	1	----- -----	A2A9,A4A9,N7A1
E-14	14	L	16221-883-800	PACKING, CARBURETOR	2	----- 2441644	A2A9,A4A9,N7A1
		L	19650-ZMO-000	GUIDE COMP., AIR	1	----- 2441644	A2A9,A4A9,N7A1
		T	19651-ZOL-000	GUIDE, AIR	1	2441645 -----	A2A9,A4A9,N7A1
E-15	3	L	17220-ZMO-000	CASE ASSY., AIR CLEANER	1	----- 2441541	A2A9,A4A9,N7A1
		T	17220-ZMO-010	1	2441542 -----	A2A9,A4A9,N7A1
	6	L	90003-ZMO-000	BOLT, FLANGE, 6X86(CT200)	2	----- 2441644	A2A9,A4A9,N7A1
		T	90003-ZMO-010	BOLT, FLANGE, 6X85(CT200)	2	2441645 -----	A2A9,A4A9,N7A1
	7	L	95701-06014-08	BOLT, FLANGE, 6X14	1	----- 2441541	A2A9,A4A9,N7A1
E-19	3	L	30500-ZL8-004	COIL ASSY., IGNITION (TEC) (USE FOR F/W OF TEC)	1	----- 2250209	A2A9,N7A1

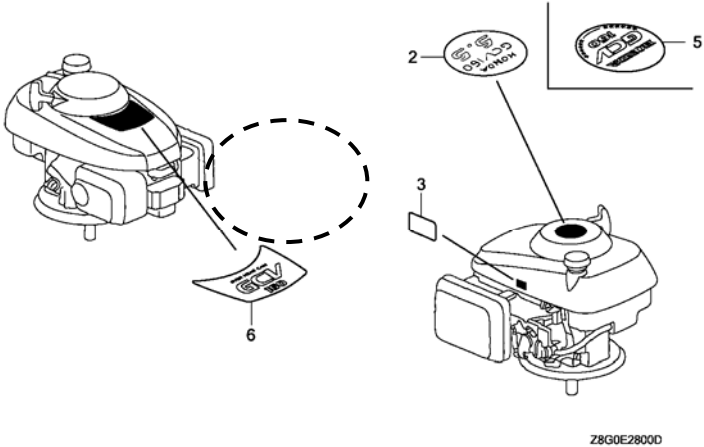
NOTE A:PART NO.CHANGE D:NEWLY PROVIDED E:PART NO.DELETION K:REQUIRED NO.CORRECTION L:APPLICATION SERIAL NO.CORRECTION
T:APPLICATION CORRECTION Z:REMARKS CHANGE

PARTS CATALOG NEWS

BOOKNo.: 14Z8G701

Block No.	Ref. No.	Note	Part No.	Description	Reqd. QTY	Serial No.	Parts catalog code
		T	30500-ZL8-014	1	2250210 ----- A2A9,N7A1	

E-28 LABEL



E-28	1	E	87101-ZM0-010	*PARTS NO. DELETION			
	6	T	87101-Z8B-000	MARK, EMBLEM (GCV160)	1	-----	A2A9

NOTE A:PART NO.CHANGE D:NEWLY PROVIDED E:PART NO.DELETION K:REQUIRED NO.CORRECTION L:APPLICATION SERIAL NO.CORRECTION
T:APPLICATION CORRECTION Z:REMARKS CHANGE